



10641 Highway 36
Covington, GA
30014

www.sunbeltbuilders.com

t 770.786.3031
f 770.786.3046

NEWTON COUNTY CENTRALIZED STORAGE FACILITY

A.C. Electrical
1090 Pleasant Valley Road
Monroe, GA 30655
ph: 404-787-4662
Adam Brown
adam@acelectricalga.com

26-0000 Electrical As-Built

CIRCUIT DIRECTORY

#		#	
1	CORD REEL	2	WATER HEATER
3	DEHUMIDIFER REC	4	" " " "
5	MORGUE REC	6	CORD REEL
7	HVAC	8	RECEPTACLE
9	HVAC	10	RECEPTACLE
11	HVAC	12	SPARE
13	MORGUE REC	14	SPARE
15	SPARE	16	SPARE
17	DATA RACK REC	18	SPARE
19	OUTSIDE LIGHTS	20	SPARE
21	MORGUE REC	22	SPARE
23	RECEPTACLE	24	SPARE
25	RECEPTACLE	26	SPARE
27	RECEPTACLE	28	SPARE
29	RECEPTACLE	30	RECEPTACLE
31	RECEPTACLE	32	OUTSIDE UNIT A/C REC STORAGE LIGHTS
33	RECEPTACLE	34	RECEPTACLE <i>Circuit</i>
35	RECEPTACLE	36	RESTROOM REC
37	CORD REEL	38	FIRE ALARM PANEL
39	LIGHTS	40	SPACE
41	CORD REEL	42	SPACE
43	ENTRANCE LIGHTS	44	SPACE
45	ENTRANCE REC	46	SPACE
47	CORD REEL	48	SPACE
49	SPACE	50	SPACE
51	SPACE	52	SPACE
53	SPACE	54	SPACE

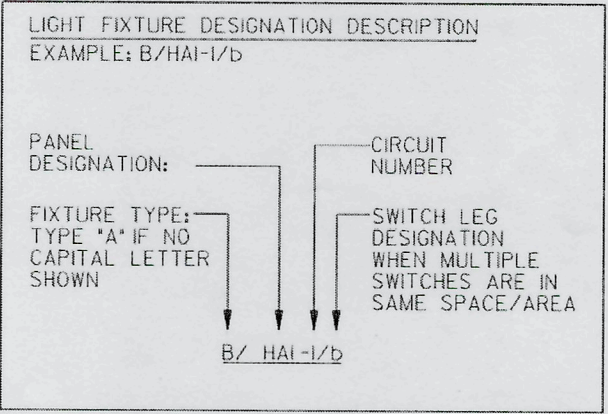
ELECTRICAL SPECIFICATIONS	
DIVISION 26 ELECTRICAL	
SECTION A: GENERAL ELECTRICAL REQUIREMENTS	
1. THESE PLANS AND SPECIFICATIONS APPLY TO ADMINISTRATIVE BUILDING RENOVATIONS AND CENTRALIZE STORAGE FACILITY, CONVENTION, GEORGIA, THE WORK DESCRIBED BY THESE PLANS AND SPECIFICATIONS APPLY TO THE INDICATED PROJECT AND MAY NOT BE MODIFIED OR REUSED WITHOUT WRITTEN APPROVAL OF THE ENGINEER.	
2. ALL WORK SHALL BE PERFORMED BY LICENSED ELECTRICAL CONTRACTOR WITH MINIMUM OF TWO YEARS OF EXPERIENCE, LIST OF PREVIOUS JOBS AND REFERENCES SHALL BE MADE AVAILABLE UPON REQUEST, CONTRACTOR SHALL PROVIDE ADEQUATE INSURANCE FOR PERSONNEL AND SHALL REPAIR ANY DAMAGE OCCURRING AS THE RESULT OF THIS PROJECT SITE AND RELATED PROPERTY.	
3. ALL WORK SHALL BE PERFORMED IN A PROFESSIONAL MANNER IN ACCORDANCE WITH THE 2020 NATIONAL ELECTRICAL CODE, LIFE SAFETY CODE NFPA 70, ADA CODES OR ACCESSIBILITY CODE, STATE OF GEORGIA ENERGY CODE AND ALL OTHER APPLICABLE CODES AND ORDINANCES.	
4. ALL PERMITS AND FEES SHALL BE OBTAINED AND PAID FOR BY THE CONTRACTOR.	
5. ALL EQUIPMENT, MATERIAL, AND DEVICES SHALL BE LISTED OR RECOGNIZED BY UNDERWRITER'S LABORATORY OR ELECTRICAL TESTING LABORATORY AND USED AND INSTALLED IN ACCORDANCE WITH ITS LISTING.	
6. ALL WORK PERFORMED SHALL BE WARRANTED FOR A PERIOD OF ONE YEAR FROM THE FINAL COMPLETION DATE EXCEPT FOR FUSES AND LAMPS IN LIGHT FIXTURES. UPON NOTIFICATION OF A PROBLEM, THE CONTRACTOR SHALL INVESTIGATE THE PROBLEM WITHIN 48 HOURS UNLESS A DIFFERENT TIME PERIOD IS AGREED TO. THE CONTRACTOR SHALL INVESTIGATE, REPAIR OR REPLACE ALL FAULTY EQUIPMENT WITHIN A REASONABLE TIME PERIOD WITHOUT CHARGE TO THE OWNER.	
7. THE TERM "PROVIDE" SHALL BE UNDERSTOOD TO MEAN, OBTAIN THE ITEM DESCRIBED, INSTALL, ITEM IN ACCORDANCE WITH THESE PLANS, SPECIFICATIONS, AND MANUFACTURER'S RECOMMENDATIONS.	
8. ALL PENETRATIONS MADE IN FIRE RATED BUILDING PORTIONS SHALL BE SEALED WITH A LISTED RESISTANT MATERIAL SUITABLE FOR THE APPLICATION.	
9. ALL INSTALLATIONS OF ELECTRICAL EQUIPMENT AND MATERIALS SHALL BE COORDINATED WITH OTHER TRADES PRIOR TO INSTALLATION.	
10. PLANS ARE DIAGRAMMATIC AND SHOW THE LOCATION OF THE EQUIPMENT, RACEWAY AND FIXTURES, AND ARE NOT TO BE SCALED. ALL DIMENSIONS SHALL BE VERIFIED AT THE BUILDING SITE.	
11. CONTRACTOR SHALL VERIFY AND COORDINATE ALL EQUIPMENT AND DEVICE LOCATIONS WITH OWNER'S PROJECT MANAGER PRIOR TO INSTALLATION.	
12. EQUIPMENT BREAKER AND WIRING REQUIREMENTS: THE CONTRACTOR SHALL SUBMIT FOR REVIEW A TABULATED SHEET OF BREAKER AND WIRING REQUIREMENTS FOR ALL MECHANICAL EQUIPMENT REQUIRING POWER AS SPECIFIED IN DIVISION 23. REQUIREMENTS SHALL BE IDENTIFIED BY HORSEPOWER OR KVA, OPERATING AMPERAGE, REQUIRED VOLTAGE AND PHASE REQUIREMENTS, AND MANUFACTURING INFORMATION. THE BASIC DESIGN PROTECTION DEVICE SIZE AND MINIMUM CIRCUIT AMPACITY SIZE, WHERE THE ELECTRICAL REQUIREMENTS SUBMITTED FOR MECHANICAL EQUIPMENT DIFFERS FROM THE BRANCH CIRCUIT SHOWN ON THE ELECTRICAL DRAWINGS WHEN USING THE BASIC DESIGN CIRCUITRY SHOWN ON THE ELECTRICAL SCHEDULES/SPECIFICATIONS OR A SIMILAR UNIT OF THE SAME SIZE FROM LISTED ALTERNATE MANUFACTURERS, THE CONTRACTOR SHALL MAKE THE NECESSARY ADJUSTMENTS TO THE BRANCH CIRCUITRY PER THE CURRENT NEC AT NO ADDITIONAL COST TO THE OWNER, WHEN CHANGES ARE MADE TO POWER REQUIREMENTS FOR EQUIPMENT DUE TO OWNER ARCHITECT/ENGINEER APPROVED VALUE ENGINEERING CHANGES TO EQUIPMENT, THE COST MUST BE INCLUDED IN THE VALUE ENGINEERING OVERALL CHANGE ORDER COST. COSTS DUE TO CHANGES IN BRANCH CIRCUITRY TO EQUIPMENT DUE TO VALUE ENGINEERING CHANGES WILL NOT BE ALLOWED AFTER THE OVERALL VALUE ENGINEERING CHANGE ORDER HAS BEEN APPROVED. IN ALL CASES, BREAKER AND WIRING REQUIREMENTS FOR MECHANICAL EQUIPMENT MUST BE PROVIDED TO THE ENGINEER BEFORE OR AT THE SAME TIME AS THE SHOP DRAWINGS FOR THE ELECTRICAL DISTRIBUTION GEAR OR EQUIPMENT. IN CASE OF A BRANCH ELECTRICAL DISTRIBUTION GEAR OR EQUIPMENT BE ORDERED OR BRANCH CIRCUITRY OBTAINED IN PRIOR TO ENGINEER REVIEW AND COMMENT ON THIS DOCUMENT, ANY EQUIPMENT ORDERED OR BRANCH CIRCUITRY OBTAINED IN THE JOBSITE WITHOUT THIS REVIEW AND COMMENT WILL BE TOTALLY AT THE CONTRACTORS RISK.	
SECTION B: BASIC MATERIALS	
1. ALL CONDUCTORS USED FOR 600 VOLTS OR LESS SHALL BE HIGH GRADE COPPER CONDUCTORS WITH 75 DEGREE C, THIN OR THIN THERMOPLASTIC INSULATION. ALL CONDUCTORS SHALL BE MADE IN THE USA. ALL CONDUCTORS ROUTED IN UNDERGROUND CONDUIT SHALL BE RATED FOR WET LOCATIONS.	
2. ALL INTERIOR 120/277 VOLT, 20 AMP POWER AND LIGHTING WIRING SHALL BE INSTALLED IN ELECTRICAL METALLIC TUBING OR "MC" CABLE OF NOT EXPOSED FOR ALL INTERIOR CIRCUITS UNLESS OTHERWISE NOTED. IF "MC" CABLE IS USED, HOMERUNS SHALL BE IN 3/4 IN. EMT. POWER CIRCUITS FOR HVAC EQUIPMENT SHALL BE IN 3/4" ELECTRICAL METALLIC CONDUIT MINIMUM. ALL CONDUIT SHALL BE SUPPORTED FROM BUILDING STRUCTURE. IT SHALL NOT BE SUPPORTED FROM DUCTWORK, PIPING, CEILING GRID OR CEILING GRID SUPPORTS, OR ANY OTHER NON-STRUCTURAL ITEM. CONDUIT SHALL BE SUPPORTED IN ACCORDANCE WITH THE NEC. CONDUIT IN EXPOSED STRUCTURE AREAS SHALL BE EMT, GALVANIZED RIGID STEEL CONDUIT SHALL BE USED IN AREAS WHERE IT WILL BE EXPOSED TO PHYSICAL DAMAGE.	
3. CONDUIT UNDERGROUND SHALL BE SCHEDULE 40 PVC, IF MORE THAN ONE CONDUIT IS PROVIDED IN A SINGLE TRENCH, THE CONDUIT SHALL BE RACKED WITH SPACERS EVERY FOUR FEET TO MAINTAIN A MINIMUM SPACING BETWEEN CONDUITS OF TWO INCHES. BACKFILL USED FOR UNDERGROUND INSTALLATIONS SHALL BE FREE OF FOREIGN MATTER, WERE EXPOSED TO WEATHER, CONDUIT SHALL BE GALVANIZED RIGID STEEL OR INTERMEDIATE METALLIC CONDUIT. THE CONDUIT MUST BE TERMINATED WITH LISTED FITTINGS AND ALL CONDUIT ENDS SHALL BE REAMED AND SMOOTH. ALL CONDUIT ENDS IN BOXES SHALL BE PROTECTED WITH INSULATED BUSHINGS.	
4. A #12 INSULATED COPPER GROUND CONDUCTOR SHALL BE INCLUDED IN ALL BRANCH CIRCUITS RATED 20 AMPERES, ALL OTHER CIRCUITS AND FEEDERS WILL BE PROVIDED WITH AN INSULATED COPPER CONDUCTOR SIZED AS NOTED OR IN ACCORDANCE WITH THE NEC, WHICHEVER IS GREATER.	
5. THE MINIMUM SIZE OF ALL CONDUCTORS NOT OTHERWISE INDICATED IS #12 AND THE MINIMUM SIZE OF ALL CONDUIT UNLESS OTHERWISE INDICATED IS 1/2 IN.	
6. ALL JUNCTION BOXES SHALL BE PROVIDED WITH COVERS AND ALL UNUSED OPENINGS SHALL BE PLUGGED. ALL JUNCTION BOXES SHALL BE INDEPENDENTLY SUPPORTED FROM STRUCTURE. COVERS OF BOXES SHALL BE LABELED WITH THE CIRCUIT NUMBER WITH A BLACK PERMANENT MARKER IN 3/4 IN. HIGH LETTERS. LEGIBLE HANDWRITTEN LETTERING IS ACCEPTABLE.	
7. ALL OUTLET BOXES SHALL BE SQUARE METAL BOXES. PROVIDE PLASTER RINGS FOR ALL OUTLET BOXES CONTAINING DEVICES TO PROVIDE A FIRM MOUNTING SUPPORT FOR THE DEVICE.	
8. ALL CONVENIENCE RECEPTACLES SHALL BE SPECIFICATION GRADE 20 AMP RECEPTACLES, OWNER TO SELECT COLOR, TAMPER RESISTANT (TYPE "TR").	
9. ALL LIGHT SWITCHES SHALL BE SPECIFICATION GRADE 20 AMP TOGGLE SWITCHES FULL LOAD RATED FOR FLOUORESCENT LAMPS, OWNER TO SELECT COLOR.	
10. PROVIDE FACEPLATES FOR ALL RECEPTACLES AND SWITCHES. COORDINATE STYLE AND COLOR WITH OWNER'S PROJECT MANAGER.	
11. PROVIDE BETWEEN 12 AND 24 INCHES OF LIQUID TIGHT FLEXIBLE CONDUIT BETWEEN RIGID CONDUIT AND ANY EQUIPMENT CONTAINING MOTORS. THE FLEXIBLE CONDUIT SHALL BE SUPPORTED TO PREVENT THE CONDUIT FROM RESTING ON THE GROUND OR CONCRETE PAD.	
12. PROVIDE WEATHERPROOF RECEPTACLE WITHIN 25 FEET OF EACH PIECE OF EXTERIOR EQUIPMENT. THIS RECEPTACLE SHALL BE MOUNTED HORIZONTALLY WITH METAL HINGED "IN USE" COVER MOUNTED TO OPEN UP. THIS OUTLET SHALL BE A GFCI RECEPTACLE. THIS RECEPTACLE SHALL BE MOUNTED IN DIE CAST NON CORRODING METAL BOX.	
13. WHEN OUTLETS OR BOXES ARE INDICATED INSTALLED ON OPPOSITE SIDES OF THE SAME WALL, THE CONTRACTOR SHALL ADJUST THE LOCATION TO OFFSET THE OUTLETS WITH A WALL STUD PROVIDING SEPERATION.	
SECTION C: DISTRIBUTION EQUIPMENT	
1. CONTRACTOR SHALL PROVIDE CONDUCTORS AND CONDUIT FOR ALL FEEDERS IN ACCORDANCE WITH THE PLANS.	
2. SEPARATELY MOUNTED CIRCUIT BREAKERS SHALL BE MOUNTED IN NEMA TYPE 1 ENCLOSURES IN INDOOR APPLICATIONS AND IN NEMA 3R ENCLOSURES IN EXTERIOR OR WET LOCATIONS. ALL CIRCUIT BREAKER ENCLOSURES SHALL BE PROVIDED WITH HINGED COVERS AND PROVISIONS FOR PADLOCKING TO COVER MAIN SWITCH.	
3. ALL EQUIPMENT CONTAINING MOTORS SHALL BE PROVIDED WITH A DISCONNECTING MEANS WITHIN TEN FEET OF THE UNIT UNLESS OTHERWISE NOTED. THIS DISCONNECTING MEANS SHALL AS A MINIMUM BE A NON-FUSED SWITCH OR TOGGLE STARTER SIZED TO MATCH THE EQUIPMENT. PROVIDE OTHER DEVICES AS NOTED ON THE PLANS. PROVIDE NEMA TYPE 1 ENCLOSURES INDOORS AND NEMA 3R OUTDOORS.	
4. PROVIDE GFCI CIRCUIT BREAKERS AND RECEPTACLES AS INDICATED ON THE PLANS AND IN THESE SPECIFICATIONS. THESE DEVICES SHALL BE CLASS A GFCI DEVICES.	

LIGHTING FIXTURE SCHEDULE	
TYPE	DESCRIPTION
A	2 FT. X 2 FT. ECONOMY RECESSED LOW PROFILE ARCHITECTURAL TROFFER WITH ACRYLIC CENTER LENS, STANDARD 0-10 DIMMING, PROVIDE 90 MINUTE EMERGENCY BATTERY PACK WHERE INDICATED ON THE DRAWINGS. LAMPS: LED, 5000 LUMENS, 43 WATTS, 3500 DEGREE K DRIVER: UNV, VOLT
B	2 FT. X 2 FT. ECONOMY RECESSED LOW PROFILE ARCHITECTURAL TROFFER WITH ACRYLIC CENTER LENS, STANDARD 0-10 DIMMING, PROVIDE 90 MINUTE EMERGENCY BATTERY PACK WHERE INDICATED ON THE DRAWINGS. LAMPS: LED, 3000 LUMENS, 25 WATTS, 3500 DEGREE K DRIVER: UNV, VOLT
C	2 FT. X 4 FT. ECONOMY RECESSED LOW PROFILE ARCHITECTURAL TROFFER WITH ACRYLIC CENTER LENS, STANDARD 0-10 DIMMING, PROVIDE 90 MINUTE EMERGENCY BATTERY PACK WHERE INDICATED ON THE DRAWINGS. LAMPS: LED, 4000 LUMENS, 34 WATTS, 3500 DEGREE K DRIVER: UNV, VOLT
D	4 FT. LED STRIPLIGHT WITH EXTRUDED ROUND ACRYLIC LENS, SURFACE/PENDANT MOUNTED, STANDARD 0-10 DIMMING, PROVIDE 90 MINUTE EMERGENCY BATTERY PACK WHERE INDICATED ON THE DRAWINGS. COORDINATE FINISH WITH OWNER. LAMPS: LED, 3600 LUMENS, 36 WATTS, 3500 DEGREE K DRIVER: UNV, VOLT
E	4 FT. LED STRIPLIGHT WITH DIFFUSE ACRYLIC LENS, SURFACE/PENDANT MOUNTED, STANDARD 0-10 DIMMING, PROVIDE 90 MINUTE EMERGENCY BATTERY PACK WHERE INDICATED ON THE DRAWINGS. LAMPS: LED, 4000 LUMENS, 36 WATTS, 3500 DEGREE K DRIVER: UNV, VOLT
F	NOMINAL 6" ROUND SURFACE MOUNTED PANEL, SLEEK ULTRA LOW PROFILE, DIFFUSING LENS, PROVIDING LIGHT UNIFORMITY, PROVIDE 90 MINUTE EMERGENCY BATTERY PACK WHERE INDICATED ON THE DRAWINGS. LAMPS: LED, 1000 LUMENS, 13 WATTS, 3500 DEGREE K DRIVER: UNV, VOLT
G	LED HIGHWAY WITH SEMI-DIFFUSE ACRYLIC LENS, ALUMINUM CONSTRUCTION TO PERFORM AT WARM AMBIENT TEMPERATURES. PROVIDE FIXTURE WITH WIREGUARD OPTION AND 360 DEGREE INTEGRATED OCCUPANCY SENSOR OPTION. LAMPS: LED, 18000 LUMENS, 134 WATTS, 4000 DEGREE K DRIVER: UNV, VOLT
OA	16 IN. EXTERIOR WALL FIXTURE, GOOSENECK MOUNTED, WET LOCATION LISTED, COORDINATE FINISH AND GOOSENECK WITH OWNER/ARCHITECT. LAMPS: LED, 1000 LUMENS, 17 WATTS, 4000 DEGREE K DRIVER: UNV, VOLT
OB	ARCHITECTURAL WALL PACK WITH DIE-CAST ALUMINUM HOUSING, R3 DISTRIBUTION, WET LOCATION LISTED, COORDINATE FINISH WITH OWNER. MOUNT FIXTURE SUCH THAT BOTTOM ELEVATION IS 13" O.A.F.F. LAMPS: LED, 6000 LUMENS, 41 WATTS, 4000 DEGREE K DRIVER: UNV, VOLT
OC	LED THERMOPLASTIC EXIT, IMPACT/SCRATCH RESISTANT AND CORROSION PROOF, TOP END OR BACK MOUNTING STANDARD UNIVERSAL FIELD SELECTABLE SINGLE OR DOUBLE FACE (PROVIDE 90 MIN. BACK-UP BATTERY). LAMPS: LED, 3 WATTS BALLAST: UNV, VOLT
OD	LED INTEGRATED THERMOPLASTIC COMBO EXIT/EMERGENCY, IMPACT RESISTANT HOUSING, TOP END, OR BACK MOUNTING STANDARD, UNIVERSAL FIELD SELECTABLE SINGLE OR DOUBLE FACE (PROVIDE 90 MIN. BACK-UP BATTERY). LAMPS: LED (2), 3 WATTS BALLAST: UNV, VOLT
OE	EXTERIOR ARCHITECTURAL STYLE LOW PROFILE LED EMERGENCY LIGHTING UNIT, SELF DIAGNOSTICS STANDARD, WET LOCATION WITH FULLY GASKETED HOUSING, PRISMATIC POLYCARB REFRACTOR, (PROVIDE 90 MIN. BACK-UP BATTERY), WHITE/ BRONZE/ BLACK SELECTED BY ARCHITECT. LAMPS: LED, 3 WATTS BALLAST: UNV, VOLT

NOTES:
1. CONTRACTOR TO VERIFY ALL VOLTAGES, GRID AND CEILING TYPES WITH THE ARCHITECT AND COORDINATE FIXTURE DIMENSION SIZE TO ENSURE A PROPER FIT IN ALL CEILING TYPES PRIOR TO ORDERING.
2. ALL LUMENS LISTED ARE DELIVERED LUMENS, ALL EQUALS TO SPECIFIED FIXTURES SHALL NOT BE ANY LOWER THAN 5% OF SPECIFIED LUMENS. WATTAGE SHALL NOT BE HIGHER THAN 85% OF SPECIFIED WATTAGE.
3. LISTING OF MANUFACTURERS DOES NOT EQUAL AUTOMATIC APPROVAL. ALL CHARACTERISTICS NOTED IN DESCRIPTION SECTION MUST BE MET IN ORDER TO BE APPROVED. WHERE VENDOR/REP. DOES NOT HAVE THE INFORMATION, PRIOR APPROVAL IS REQUIRED TO BE SUBMITTED TO ENGINEER TEN (10) DAYS PRIOR TO BID.

GENERAL NOTES:

- A. ALL FLUSH RECESSED OUTLET BOXES SHALL BE INSTALLED SUCH THAT FRONT EDGE OF THE BOX WILL NOT BE SET BACK OF THE FINISHED SURFACE MORE THAN 1/8 IN. IN ORDER TO COMPLY WITH NEC, 314-20, SUPPORT OF OUTLET BOX BY RECEPTACLE AND COVERPLATE IS NOT ACCEPTABLE. CAREFULLY COORDINATE ROUGH-IN WITH BLOCK MASONS AND GROUT-IN CELL CONTAINING OUTLET BOX.
- B. DO NOT SCALE DRAWINGS TO LOCATE EQUIPMENT OR OUTLETS. MOUNTING HEIGHTS AS INDICATED ON THE DRAWINGS SHALL BE FROM THE FINISHED FLOOR TO THE CENTER LINE OF THE OUTLET BOX.
- C. THE ELECTRICAL DRAWINGS ARE ONLY A PART OF THE CONTRACT DOCUMENTS. ALL OF THE DRAWINGS AND SPECIFICATIONS MUST BE REVIEWED FOR THEIR INTERRELATIONSHIP AND REQUIRED COORDINATION BETWEEN DISCIPLINES.
- D. ALL RECEPTACLES SHALL BE TAMPER RESISTANT (TYPE "TR").



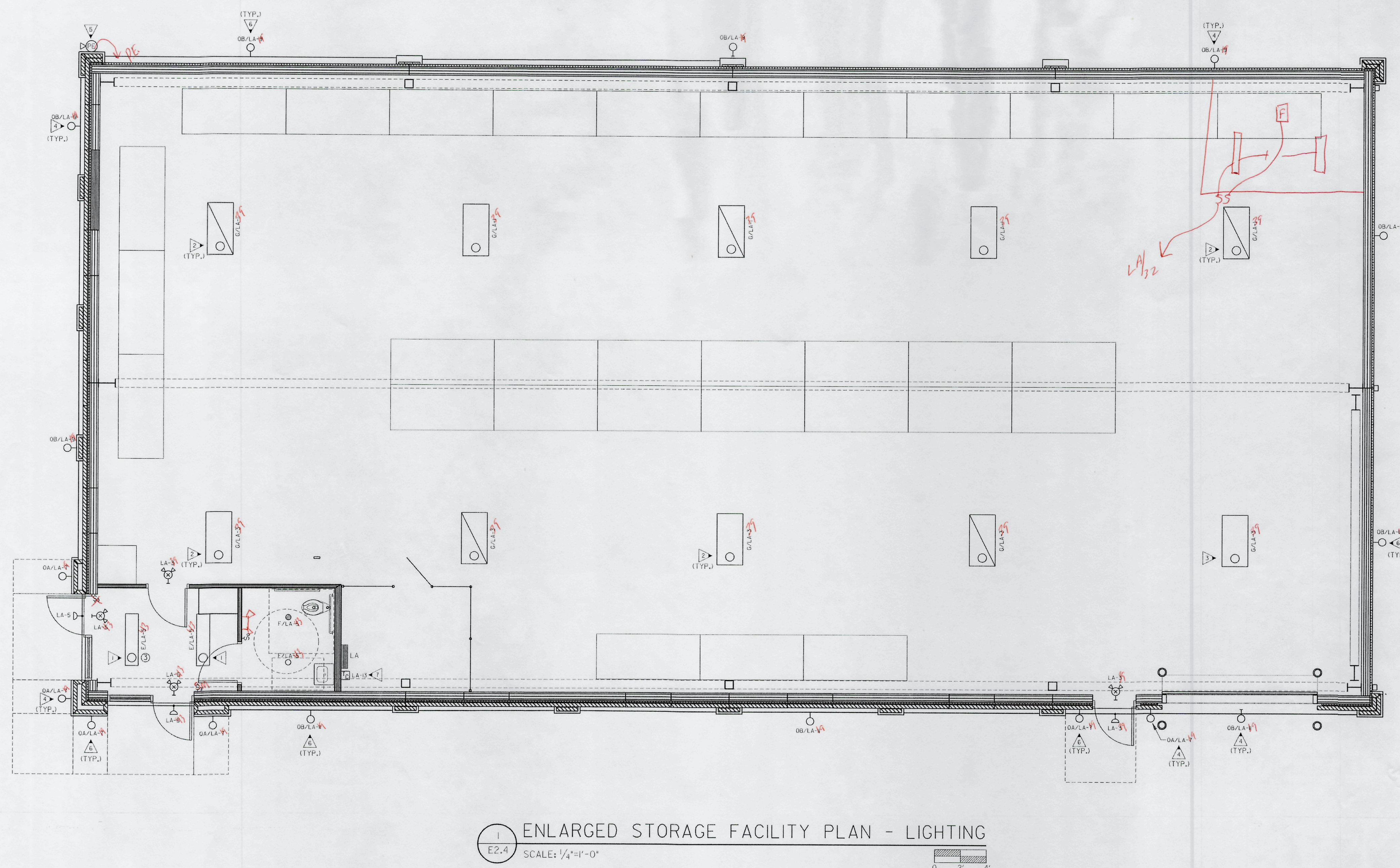
PROVIDE ALL BRANCH CIRCUIT CONDUIT/CONDUCTORS AS NECESSARY TO CONNECT ALL DEVICES SHOWN ON THE CIRCUIT, PROVIDE DEDICATED NEUTRALS FOR ALL CIRCUITS, (STRIPED NEUTRAL WITH PHASE COLOR STRIPING)

ELECTRICAL LEGEND	
LIGHTING AND POWER	
	CONDUIT RUN CONCEALED ABOVE CEILING OR IN WALL, HASH MARKS INDICATE NUMBER OF CONDUCTORS, 13 WIRE UNLESS SHOWN.
	CONDUIT RUN CONCEALED BELOW FLOOR SLAB, OR UNDERGROUND.
	CONDUIT TO PANELBOARD, LETTER OR LETTERS INDICATE PANELBOARD, NUMBERS INDICATES CIRCUIT NUMBERS.
	LIGHT FIXTURE, SEE LIGHTING FIXTURE SCHEDULE FOR MOUNTING AND TYPE.
	LIGHT FIXTURE, SEE SCHEDULE FOR MOUNTING AND TYPE, PROVIDE WITH 100 LUMEN, 90 MINUTE BATTERY PACK, FIXTURE NORMALLY SWITCHED WITH OTHER FIXTURES IN THIS AREA.
	LIGHTING FIXTURE, WALL BRACKET MOUNTED, MOUNTING HEIGHT AS NOTED ON DRAWINGS OR AS SHOWN ON ARCHITECTURAL ELEVATIONS.)
	DUPLEX CONVENIENCE OUTLET, 18 IN. ABOVE FLOOR UNLESS OTHERWISE NOTED.
	CEILING MOUNTED OUTLET WITH ONE TWIST LOCK SIMPLEX OUTLET, SUPPORT BOX BY 1/2 IN. THREADED ROD TO STRUCTURE, PROVIDE
	DUPLEX CONVENIENCE OUTLET, 8 IN. ABOVE COUNTER TOP OR 42 IN. MOUNTING HEIGHT UNLESS OTHERWISE NOTED.
	QUADRIPLEX CONVENIENCE OUTLET, 18 IN. ABOVE FLOOR UNLESS OTHERWISE NOTED.
	DUPLEX CONVENIENCE OUTLET, GFI TYPE, 18 IN. MOUNTING HEIGHT, "WP" WHERE SHOWN INDICATES WEATHERPROOF, PROVIDE METAL IN-USE WEATHERPROOF COVERPLATE.
	DUPLEX CONVENIENCE OUTLET, GFI TYPE, MOUNTED 8 INCHES ABOVE COUNTER OR AT 42 IN. ABOVE FLOOR UNLESS OTHERWISE NOTED.
	JUNCTION BOX, FLUSH WALL MOUNTED, AT 18 IN. TO CENTERLINE UNLESS OTHERWISE NOTED.
	JUNCTION BOX LOCATED ABOVE CEILING.
	SPECIAL RECEPTACLE TO SUIT EQUIPMENT BEING FURNISHED.
	FLUSH FLOOR BOX WITH DUPLEX CONVENIENCE OUTLET, AND COMBINATION TELEPHONE AND DATA OUTLET IN FLUSH FLOOR BOX, PROVIDE WALKER 880 OMNIBOX SERIES TWO GANG CAST IRON OR PLASTIC FLOOR BOX WITH BRASS FLANGE AND COVERPLATE.
	FLUSH FLOOR BOX WITH DUPLEX CONVENIENCE OUTLET, PROVIDE WALKER 880 OMNIBOX SERIES IRON OR PLASTIC FLOOR BOX WITH BRASS FLANGE AND COVERPLATE.
	SINGLE POLE TOGGLE SWITCH, 42 IN. ABOVE FLOOR.
	THREE WAY SWITCH AS INDICATED, 42 IN. MOUNTING HEIGHT.
	0-10 VOLT 1 SLIDE TYPE DIMMER, 2015 IECC COMPLIANT, (MANUAL ON TO 50%, 42 IN. ABOVE FLOOR, "F" MUST BE COMPATIBLE WITH VAC SENSOR AND POWER PACK.)
	THREE WAY, 0-10 VOLT SLIDE TYPE DIMMER, 42 IN. ABOVE FLOOR, 2015 IECC COMPLIANT, (MANUAL ON TO 50%, DIM 1-100%, AUTO OFF, MUST BE COMPATIBLE WITH VAC SENSOR AND POWER PACK.)
	TRANSFORMER, SEE RISER DIAGRAM FOR SIZE AND VOLTAGE.
	PANELBOARD, SEE SCHEDULE.
	DISCONNECT SWITCH.
TELEPHONE/DATA/TV SYSTEMS	
	COMBINATION COMPUTER AND TELEPHONE OUTLET, 18 IN. TO CENTER LINE OF OUTLET UNLESS NOTED OTHERWISE, (2 DATA, 1 TEL)
	COMPUTER OUTLET, 18 IN. ABOVE FLOOR UNLESS NOTED OTHERWISE, (2 DATA)
	COMPUTER OUTLET, MOUNTED 8 INCHES ABOVE COUNTER OR AT 42 IN. ABOVE FLOOR UNLESS OTHERWISE NOTED, (2 DATA)
	WIRELESS ACCESS POINT, (2 DATA)
	TELEVISION OUTLET, 18 IN. TO CENTER LINE OF OUTLET UNLESS NOTED OTHERWISE.
	PLYWOOD BACKBOARD, "TB" INDICATES TELEPHONE BOARD.
LIGHTING CONTROL SENSORS	
	COMBINATION 360 DEGREE, ULTRASONIC AND PASSIVE INFRARED SENSOR (WATT STOPPER "OT-300", GREENGATE, NOVITAS, HUBBELL, LEVITON, SENSOR SWITCH, "V" INDICATES VACUUMY SENSOR, UNIT MUST COMPLY WITH IECC 2015 REQUIREMENTS AND BE COMPATIBLE WITH DIMMER)
	PASSIVE INFRARED SENSOR (WATT STOPPER "WPIR", GREENGATE, NOVITAS, HUBBELL, LEVITON, SENSOR SWITCH).
	ULTRASONIC OCCUPANCY SENSOR (WATT STOPPER "WT-2250", GREENGATE, NOVITAS, HUBBELL, LEVITON, SENSOR SWITCH).
	WALL MOUNTED SENSOR SWITCH, 42 IN. MOUNTING HEIGHT (WATT STOPPER DSW-300, GREENGATE, NOVITAS, HUBBELL, LEVITON, SENSOR SWITCH).
FIRE ALARM SYSTEM (VOICE EVAC IN ADMIN BLDG ONLY, NOT IN STORAGE BUILDING)	
	FIRE ALARM CONTROL PANEL, SURFACE MOUNTED.
	FIRE ALARM ANNUNCIATOR, FLUSH MOUNTED.
	STROBE LIGHT, 80 IN. ABOVE FLOOR TO THE BOTTOM OF THE LENS.
	FIRE ALARM SIGNAL, SPEAKER AND FLASHING LIGHT, 6 FT.-8 IN. MOUNTING HEIGHT.
	FIRE ALARM SIGNAL, HORN AND FLASHING LIGHT, 6 FT.-8 IN. MOUNTING HEIGHT.
	FIRE ALARM PULL STATION, WALL MOUNTED 42 IN. ABOVE FLOOR.
	SMOKE DETECTOR, PHOTOELECTRIC TYPE.
	FIRE ALARM DUCT SMOKE DETECTOR LOCATED IN HVAC SUPPLY AIR DUCT, PROVIDE IN UNITS 2000 CFM AND GREATER, DETECTOR SHALL SHUT DOWN UNIT UPON ACTIVATION.
	TAMPER SWITCH, FURNISHED AND INSTALLED WITH SPRINKLER SYSTEM, INTERLOCK WITH FIRE ALARM SYSTEM BY ELECTRICAL.
	FLOW SWITCH, FURNISHED AND INSTALLED WITH SPRINKLER SYSTEM, INTERLOCK WITH FIRE ALARM SYSTEM BY ELECTRICAL.
SECURITY SYSTEM (RACEWAY AND BOXES ONLY)	
	WALL MOUNTED CCTV SECURITY CAMERA, PROVIDE JUNCTION BOX AND RACEWAY WITH PULL STRING TO SECURITY EQUIPMENT LOCATION, COORDINATE MOUNTING HEIGHT WITH ARCHITECTURAL, RACEWAY AND BOXES ONLY.)
	CEILING MOUNTED 360 DEGREE CCTV SECURITY CAMERA, PROVIDE JUNCTION BOX AND RACEWAY WITH PULL STRING TO SECURITY EQUIPMENT LOCATION, COORDINATE MOUNTING LOCATION WITH ARCHITECTURAL, RACEWAY AND BOXES ONLY.)
NOTES: 1. ALL MOUNTING HEIGHTS ARE FROM FINISHED FLOOR TO CENTERLINE OF OUTLET OR DEVICE. 2. ALL RECEPTACLES SHALL BE TAMPER RESISTANT (TYPE "TR").	

THE ELECTRICAL DEMOLITION DRAWINGS AND EXISTING PANEL SCHEDULES HAVE BEEN PREPARED BASED ON INFORMATION PROVIDED BY OTHERS. THE ENGINEER HAS NOT FIELD VERIFIED THE ACCURACY OF THIS INFORMATION. THE CONTRACTOR SHALL FIELD VERIFY EXISTING LOCATIONS, PANEL SCHEDULES, AND AVAILABLE CIRCUITS PRIOR TO ANY ELECTRICAL WORK. NO EXCEPTIONS.

KEYED NOTES: (THIS SHEET ONLY)

1. SUSPEND FIXTURE SUCH THAT BOTTOM ELEVATION IS 2'-0" A.F.F. VERIFY MOUNTING HEIGHT WITH ARCHITECTURAL PRIOR TO ROUGH-IN.
2. SUSPEND FIXTURE SUCH THAT BOTTOM ELEVATION IS 18'-0" A.F.F. VERIFY MOUNTING HEIGHT WITH ARCHITECTURAL PRIOR TO ROUGH-IN.
3. ADJUST LOCATION OF LIGHT FIXTURE AS REQUIRED FOR UNIMPEDED OPERATION OF OVERHEAD DOOR.
4. COORDINATE EXIST MOUNTING HEIGHT PRIOR TO ELECTRICAL ROUGH-IN.
5. LOCATE P.A.E. CELL FACING NORTH, CLEAR OF MAN MADE LIGHT SOURCES - H-BOX TO HOUSE P.A.E. CELL BE RECESSED MOUNTED WITH STAINLESS STEEL COVER.
6. ROUTE VIA 4 POLE EXTERIOR LIGHTING CONTACTOR/TIMECLOCK LOCATED ADJACENT PANELS, PHOTO CELL SHALL CONTROL DUSK TILL DAWN (TIMECLOCK, TIMECLOCK SHALL INTERRUPT CIRCUIT DURING MIDDNIGHT HOURS. SEE KEYED NOTE 6, USE PHOTO'S EYE FOR 3/4" N.C. CONTACT). UNLESS NOTED OTHERWISE, PROVIDE MANUAL OVERRIDE SWITCH, COORDINATE WITH LOCAL LOCATION WITH OWNER.
7. PROVIDE 365 DAY DIGITAL PROGRAMMABLE TIME ELECTRONIC CONTROL, TWO WORK WITH TWO CONTACTS, TWO DIFFERENT 5 DAY EVENTS PER WEEK, CONTACTS RATED FOR MINIMUM 30 AMPS AND 240 VOLTS. PROVIDE WITH NEMA TYPE I ENCLOSURE AND CAPACITOR BACKUP, PROVIDE ON-OR-OFF OR ON-OFF PROVIDE AUXILIARY INPUT FROM PHOTO CELL FOR OVERRIDE ON-OR-OFF CONTROL.
8. REFER TO NEW STORAGE BUILDING POWER RISER DIAGRAM, I/E/S.2.



LIGHT FIXTURE DESIGNATION DESCRIPTION
EXAMPLE: R/H&I-1/b

PANEL DESIGNATION: _____

FIXTURE TYPE:
TYPE "A" IF NO
CAPITAL LETTER
SHOWN

CIRCUIT NUMBER

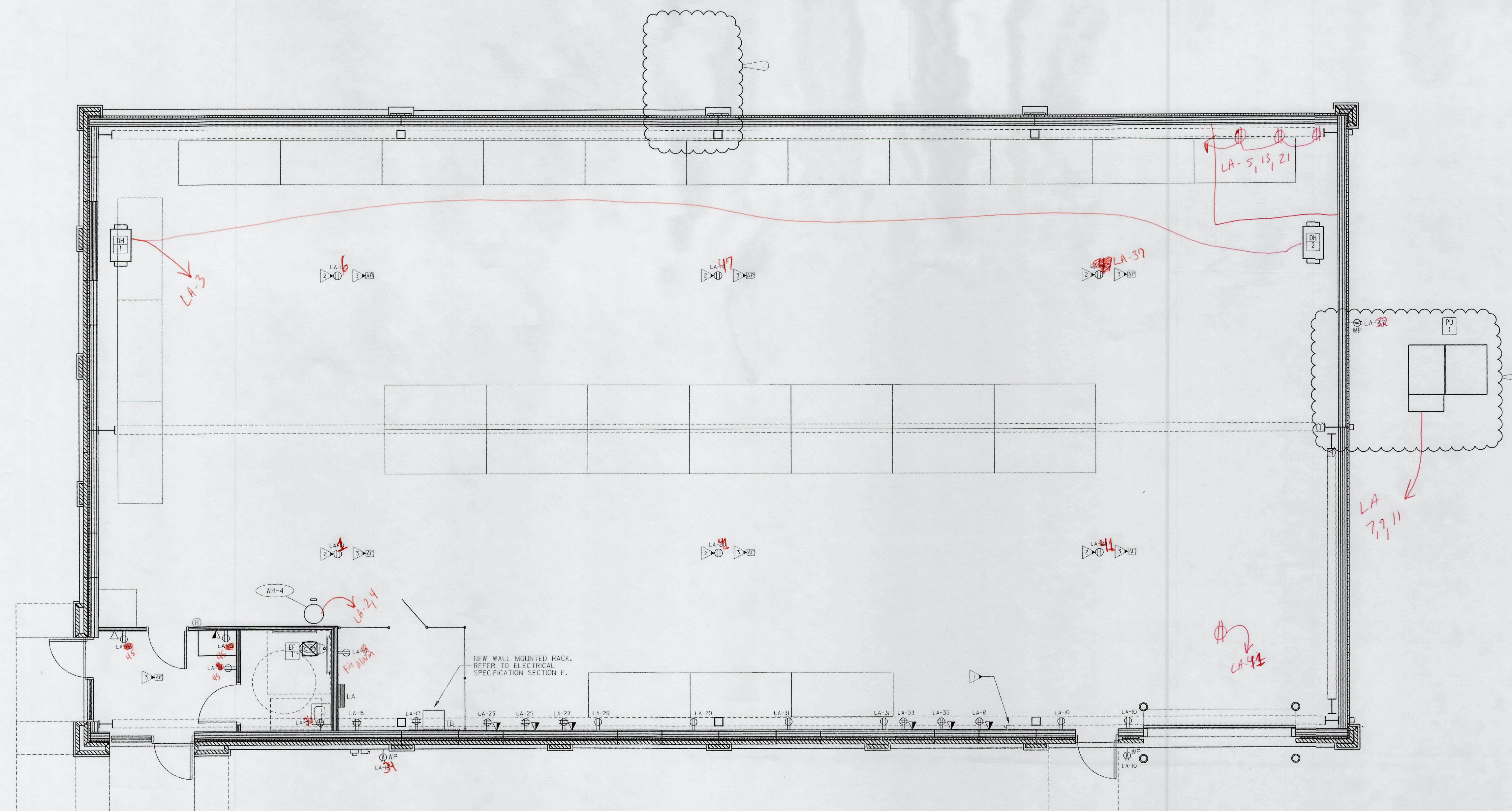
SWITCH LEG
DESIGNATION
WHEN MULTIPLE
SWITCHES ARE IN
SAME SPACE/AREA

B/ HAI-1/D

PROVIDE ALL BRANCH CIRCUIT CONDUIT/CONDUCTORS AS NECESSARY TO
CONNECT ALL DEVICES SHOWN ON THE CIRCUIT. PROVIDE DEDICATED NEUTRALS
FOR ALL CIRCUITS. (STRIPED NEUTRAL WITH PHASE COLOR STRIPING)

KEYED NOTES: (THIS SHEET ONLY)

- ▶ 40X10K1 CHARGER, DESIGN BASIS, 208V, 3 PHASE, 100A/3P BREAKER, 100A/3P FUSED DISCONNECT, 450V, 100A PER AMP, 442-80, 1/2" MIN. IN, C, VERIFY EXACT POWER REQUIREMENTS WITH EQUIPMENT PROVIDER PRIOR TO ROUGH-IN, COORDINATE EXACT MOUNTING LOCATION AND HEIGHT WITH OWNER/ARCHITECT PRIOR TO ROUGH-IN.
- ▶ MOUNT RECEPTACLE TO CEILING STRUCTURE FOR POWER TO EXTENSION CORD REEL, COORDINATE EXACT MOUNTING LOCATION WITH EQUIPMENT INSTALLER, REFER TO CABLE REEL DETAIL, 6/ES.2.
- ▶ PROVIDE BISCUIT STYLE DATA OUTLET FLUSH MOUNTING ON CEILING FOR 100V, 30A, 3P, COORDINATE EXACT LOCATION WITH OWNER/ARCHITECT PRIOR TO ROUGH-IN.



1 ENLARGED STORAGE FACILITY PLAN - POWER & TEL/DATA/TV SYSTEMS
E3.4 SCALE: 1/4"=1'-0"

PROVIDE ALL BRANCH CIRCUIT CONDUIT/CONDUCTORS AS NECESSARY TO
CONNECT ALL DEVICES SHOWN ON THE CIRCUIT. PROVIDE DEDICATED NEUTRAL
FOR ALL CIRCUITS. (STRIPED NEUTRAL WITH PHASE COLOR STRIPING)

