

FIRE STATION 23

CITY OF COVINGTON



NOTE: RENDERED PERSPECTIVE IMAGE SHOWN ON SHEET CS-1.01 IS FOR GRAPHIC ILLUSTRATION ONLY.

OWNER:

COVINGTON FIRE DEPARTMENT
2101 PACE STREET
COVINGTON, GA 30014

CONSTRUCTION MANAGER:

SUNBELT BUILDERS
10641 HIGHWAY 38
COVINGTON, GA 30014

ARCHITECT:

JERICHO DESIGN GROUP
208 PIRKLE FERRY RD
SUITE C
CUMMING, GA 30040

CIVIL:

GEORGIA CIVIL, INC.
3111 NORTH MAIN STREET
UNIT C, SUITE 101
MADISON, GA 30650

STRUCTURAL:

SHEAR STRUCTURAL
34111 PIERCE DRIVE
SUITE 100
CHAMBLEE, GA 30341

MECHANICAL & PLUMBING:

TOTAL ENGINEERS
169 NEW STREET
MACON, GA 31201

ELECTRICAL:

ELECTRICAL DESIGN CONSULTANTS, INC.
175 NEW STREET
SUITE 1
MACON, GA 31201

CHIEF: JOE DOSS
TEL: 770-385-2100
jdoss@cityofcovington.org

MIKE MCCROREY
TEL: 404-644-2939
mmccrorey@sunbeltbuilders.com

DOUG SHAW
TEL: 678-983-5992
dshaw@jericho-design.com

JASON BROWN
TEL: 770-713-9972
jason@georgiacivil.com

HOLLY JEFFREYS
TEL: 678-438-2879
hjeffreys@shearstructural.com

KRUNAL PATEL
TEL: 478-741-4632
krunalpatel@totalengineers.com

TODD WRIGHT
TEL: 478-781-1833 EXT. 104
twright@edc1973.com

SHEET NO.

SHEET NAME

SD

DD

CD

01 COVER

CS-1.01

COVER SHEET

X

02 LIFE SAFETY

LS-1.01

LEVEL 1 - LIFE SAFETY

X

LS-1.02

LEVEL 2 - LIFE SAFETY

X

03 GENERAL

G-1.01

ADA REGULATORY DETAILS & DIAGRAMS

X

07a ARCHITECTURAL

AS-1.01

ARCHITECTURAL SITE PLAN

X

07c ARCHITECTURAL

A-1.01D

LEVEL 1 - DIMENSION PLAN

X

A-1.01R

LEVEL 1 - REFERENCE PLAN

X

A-1.02D

LEVEL 2 - DIMENSION PLAN

X

A-1.02R

LEVEL 2 - REFERENCE PLAN

X

A-2.01

LEVEL 1 - REFLECTED CEILING PLAN

X

A-2.02

LEVEL 2 - REFLECTED CEILING PLAN

X

A-3.01

ROOF PLAN

X

A-4.01

EXTERIOR ELEVATIONS

X

A-4.02

EXTERIOR ELEVATIONS

X

A-5.01

BUILDING SECTIONS

X

A-7.01

DOOR & WINDOW SCHEDULE AND ELEVATIONS

X

A-7.51

DOOR & WINDOW DETAILS

X

A-9.01

EXTERIOR 3D VIEWS

X

A-9.02

EXTERIOR 3D VIEWS

X

08 INTERIORS

ID-2.01

LEVEL 1 - FINISH & REFERENCE PLAN

X

ID-2.02

LEVEL 2 - FINISH & REFERENCE PLAN

X

ID-2.51

ENLARGED FINISH PLANS & ELEVATIONS

X

ID-2.52

ENLARGED FINISH PLANS & ELEVATIONS

X

ID-2.53

ENLARGED FINISH PLANS & ELEVATIONS

X

ID-2.54

ENLARGED FINISH PLANS & ELEVATIONS

X

ID-5.01

INTERIOR SECTIONS & DETAILS

X

Grand Total: 26

VICINITY MAP

ABBREVIATIONS

@

ACT

A.F.F.

ALUM.

B/

BD.

BLDG.

BR.

BRG

CFMF

C.L.

CL.EAR

C.J.

CMU

COORD.

COL.

CONC.

CONT.

Ø

DWG.

D.S.

EA.

ELEV.

ELEC.

E.S.

EXP.

EXT.

E.W.C.

F.D.

FEC

F.F.

FL.

F.O.

F.O.F.

F.O.M.

FOIC

F.R.

FRAN.

FRP

G.C.

GYP. BD.

H.M.

HT

I.B.C.

AT

ACOUSTICAL CEILING TILE

ABOVE FINISHED FLOOR

BOTTOM OF

BOARD

BUILDING

BRICK

BEARING

COLD FORMED METAL FRAMING

CENTER LINE

CLEAR

CONTROL JOINT

CONCRETE MASONRY UNIT

COORDINATE

COLUMN

CONCRETE

CONTINUOUS

DIAMETER

DRAWING

DOWN SPOUT

EACH

ELEVATION

ELECTRIC

EQUIPMENT SUPPLIER

EXPANSION

EXTERIOR

ELECTRIC WATER COOLER

FLOOR DRAIN

FIRE EXTINGUISHER CABINET

FINISHED FLOOR

FLOOR

FACE OF

FACE OF FINISH

FACE OF MASONRY

FURNISHED BY OWNER INSTALLED

BY CONTRACTOR

FIRE RETARDANT

FRANCHISEE

FIBERGLASS REINFORCED POLYESTER

GENERAL CONTRACTOR

GYPSPUM BOARD

HOLLOW METAL

HEIGHT

INSTALLED BY CONTRACTOR

JT.

L.L.

MFR.

MAT.

MAX.

MECH.

MIN.

MTL.

NC.

N.I.C.

N.T.S.

NOT TO EXCEED

NOT TO SCALE

O.D.

OVERFLOW DRAIN

OPP.

PL.

PLASTIC LAMINATE

PLYWOOD

PR.

P.T.

PRESSURE TREATED

ON CENTER

R.D.

ROOF DRAIN

SUPPLIED BY OWNER

SCHED.

SIM.

SIMILAR

STL.

STEEL

STRUCT.

STRUCTURAL

T/

TOP OF

T&G

TONGUE AND GROOVE

TYP.

TYPICAL

U.N.O.

UNLESS NOTED OTHERWISE

VERT.

VERTICAL

VWC

VINYL WALL COVERING

W

WIDE

W/

WITH

WD.

WOOD

W.W.F.

WELDED WIRE FABRIC

SYMBOLS

1

A-3.1

ELEVATION MARK

BATT INSULATION

SECTION MARK

SIM - SIMILAR

OH - OPPOSITE HAND

EARTH

ENLARGED PLAN / DETAIL MARK

CONCRETE

001

DOOR REFERENCE NUMBER

BRICK

OFFICE

101

ROOM NAME & NUMBER

STEEL, IRON

A

COLUMN AND GRID NUMBER

WOOD

SF-1

WINDOW REFERENCE NUMBER

MORTAR NET

SOLID GROUT

WOOD DIMENSIONAL

SHEATHING

PLASTER, GYPSUM WALLBOARD

RIGID INSULATION

GENERAL NOTES

1. THESE DRAWINGS ARE THE PROPERTY OF JERICHO DESIGN GROUP, LLC AND SHALL NOT BE REPRODUCED OR COPIED (PHYSICALLY AND/OR DIGITALLY) IN PART OF WHOLE. THEY ARE TO BE USED FOR THIS PROJECT ONLY AND ARE NOT TO BE USED ON ANY OTHER PROJECT.

2. DRAWINGS AND SPECIFICATIONS ARE INTENDED TO AGREE AND BE MUTUALLY EXPLANATORY. THEY SHALL BE ACCEPTED/USED AS A WHOLE; NOT SEPARATELY. SHOULD ANY ITEMS BE OMITTED FROM THE DRAWINGS AND BE HEREIN SPECIFIED, OR VICE VERSA, IT SHALL BE EXECUTED THE SAME AS IF SHOWN AND COMBINED IN BOTH. IT IS THE RESPONSIBILITY OF THE CONTRACTOR TO SUPPLY ENTIRE SET TO EACH SUBCONTRACTOR.

3. THE CONTRACTOR IS TO NOTIFY ARCHITECT OF ANY DISCREPANCIES AFTER FULL REVIEW OF CONTRACT DOCUMENTS TO INCLUDE BUT NOT LIMITED TO ERRORS, OMISSIONS, INCONSISTENCIES, DISCREPANCIES, AND CONFLICTS WITH THE DRAWINGS/SPECIFICATIONS OR AS RELATED TO FIELD CONDITIONS. CONTRACTOR TO CONTACT ARCHITECT IMMEDIATELY TO DISCUSS A RESOLUTION.

4. DO NOT SCALE THE DRAWINGS UNDER ANY CONDITION.

5. WORK PERFORMED SHALL BE IN ACCORDANCE TO ALL FEDERAL, STATE AND LOCAL BUILDING CODE REQUIREMENTS PER INDUSTRY STANDARDS. ALL REQUIRED PERMITS AND FEES ASSOCIATED ARE TO BE THE RESPONSIBILITY OF THE CONTRACTOR NECESSARY FOR START AND COMPLETION OF THE PROJECT. COPIES OF INSPECTIONS AND PERMITS SHALL BE FURNISHED TO OWNER AT REQUEST AND/OR AT PROJECT CLOSEOUT.

6. CONTRACTOR TO TAKE PRECAUTIONS IN PROTECTING THE WORK DURING CONSTRUCTION. ANY DAMAGE TO BE RESTORED TO ORIGINAL CONSTRUCTION BY THE CONTRACTOR. PATCH AND REPAIR ALL ITEMS DAMAGED OR ALTERED DURING CONSTRUCTION BY THE CONTRACTOR. ALL PATCHES SHALL BLEND WITH ADJACENT MATERIAL, COLOR, FINISH, AND TEXTURE. ALL EXISTING WORK FURNISHINGS, EQUIPMENT OR MATERIAL TO REMAIN THAT ARE DAMAGED BY THE CONTRACTOR'S OPERATION SHALL BE REPAIRED BY THE CONTRACTOR AT NO ADDITIONAL COST TO THE OWNER.

7. REQUESTS FOR SUBSTITUTIONS MUST BE SUBMITTED IN WRITING TO THE ARCHITECT FOR CONSIDERATION ONLY IF IMPACT TO SCHEDULE, COST CHANGE OR QUALITY OF PRODUCT. ACCEPTANCE BY ARCHITECT DOES NOT IDENTIFY PRODUCT TO BE OF BETTER QUALITY THAN SPECIFIED PRODUCT.

8. SEAL ALL EXTERIOR PENETRATIONS AND VOIDS ON EXTERIOR BUILDING ENVELOPE.

9. FIELD VERIFY ALL EXISTING CONDITIONS PRIOR TO COMMENCEMENT OF ANY CONSTRUCTION ACTIVITIES. NOTIFY THE ARCHITECT OF ANY DISCREPANCIES BETWEEN FIELD CONDITIONS AND CONTRACT DOCUMENTS PRIOR TO ANY CONSTRUCTION ACTIVITY IN AREA OF CONCERN.

10. THE LOCATION OF THE EXISTING UTILITIES & STRUCTURES SHOWN HEREIN ARE APPROXIMATE. IT SHALL BE THE RESPONSIBILITY OF THE CONTRACTOR TO VERIFY THE EXISTENCE & ACTUAL LOCATIONS OF ALL, SHOWN OR NOT SHOWN. ANY DAMAGES RESULTING BY CONTRACTORS' ACTIVITIES SHALL BE REPAIRED AT THE EXPENSE OF THE CONTRACTOR.

11. THE CONTRACTOR SHALL PROVIDE ADEQUATE BRACING & SHORING FOR ALL WORK DURING THE CONSTRUCTION PERIOD.

12. PROVIDE SEPARATION BETWEEN ALL DISSIMILAR METALS INCLUDING SCREWS, NAILS & OTHER FASTENING DEVICES TO AVOID GALVANIC CORROSION.

13. PROVIDE EXPANSION AND CONTROL JOINTS IN ALL WORK AS PER PRODUCT MANUFACTURER'S STANDARDS, OR SPECIFICATIONS, UNLESS NOTED OTHERWISE.

14. ALL DIMENSIONS ARE WITNESSED TO THE OUTSIDE FACE OF MASONRY, FACE OF STUD, CENTER OF COLUMN, TOP OF STRUCTURAL CONCRETE SLAB OR ROUGH WINDOW OPENING UNLESS NOTED OTHERWISE.

15. NOTES APPEAR ON VARIOUS SHEETS FOR DIFFERENT SYSTEMS AND MATERIALS. SHEETS ARE TO BE REVIEWED AND NOTES ON INDIVIDUAL SHEETS SHALL BE APPLIED TO RELATED DRAWINGS AND DETAILS.

16. INTERIOR PARTITION MOVEMENT CONTROL - VERTICAL CONTROL JOINTS FOR ANY WALL LENGTH ARE TO OCCUR AT NOT MORE THAN 30'-0" O.C. IN THE HORIZONTAL DIRECTION, UNLESS NOTED OTHERWISE.

17. THE CONTRACTOR IS RESPONSIBLE FOR THE COORDINATION OF ALL PARTS OF THE WORK SO THAT NO WORK SHALL BE LEFT IN AN UNFINISHED OR INCOMPLETE CONDITION.



FIRE STATION #23

City of Covington

HIGHWAY 36
COVINGTON, GA 30014

[illegible]

Drawn By _____
Author

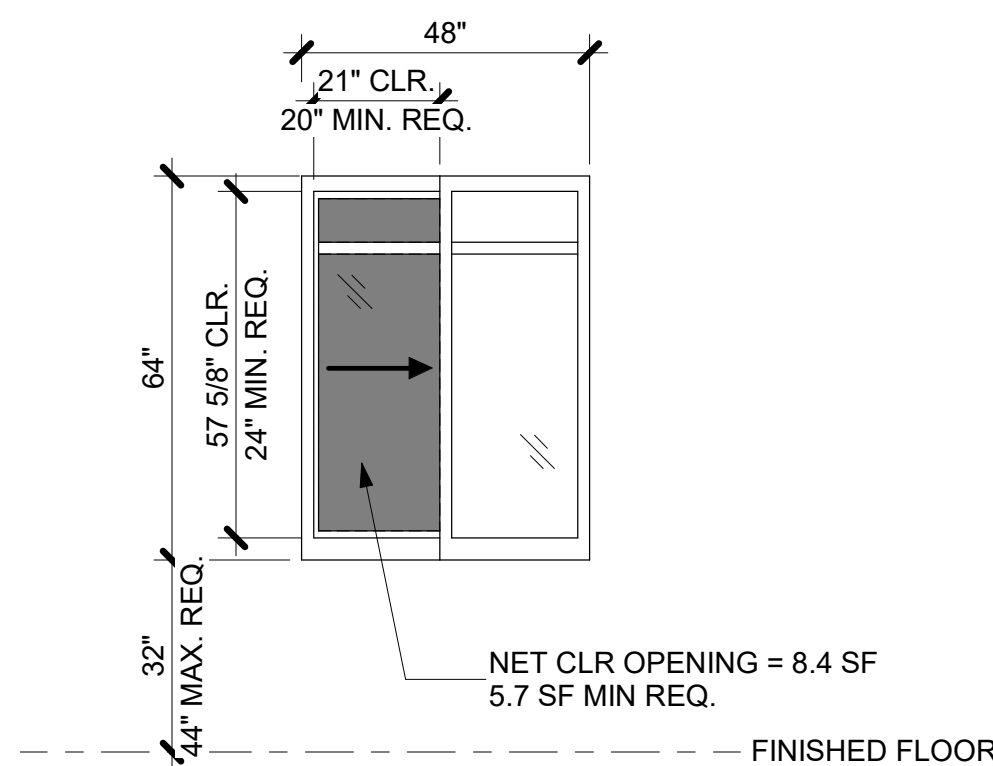
Date	Job No.
12/15/2025	25033

Sheet Title
COVER SHEET

Sheet No. _____

CS-1.01

NOT RELEASED FOR CONSTRUCTION

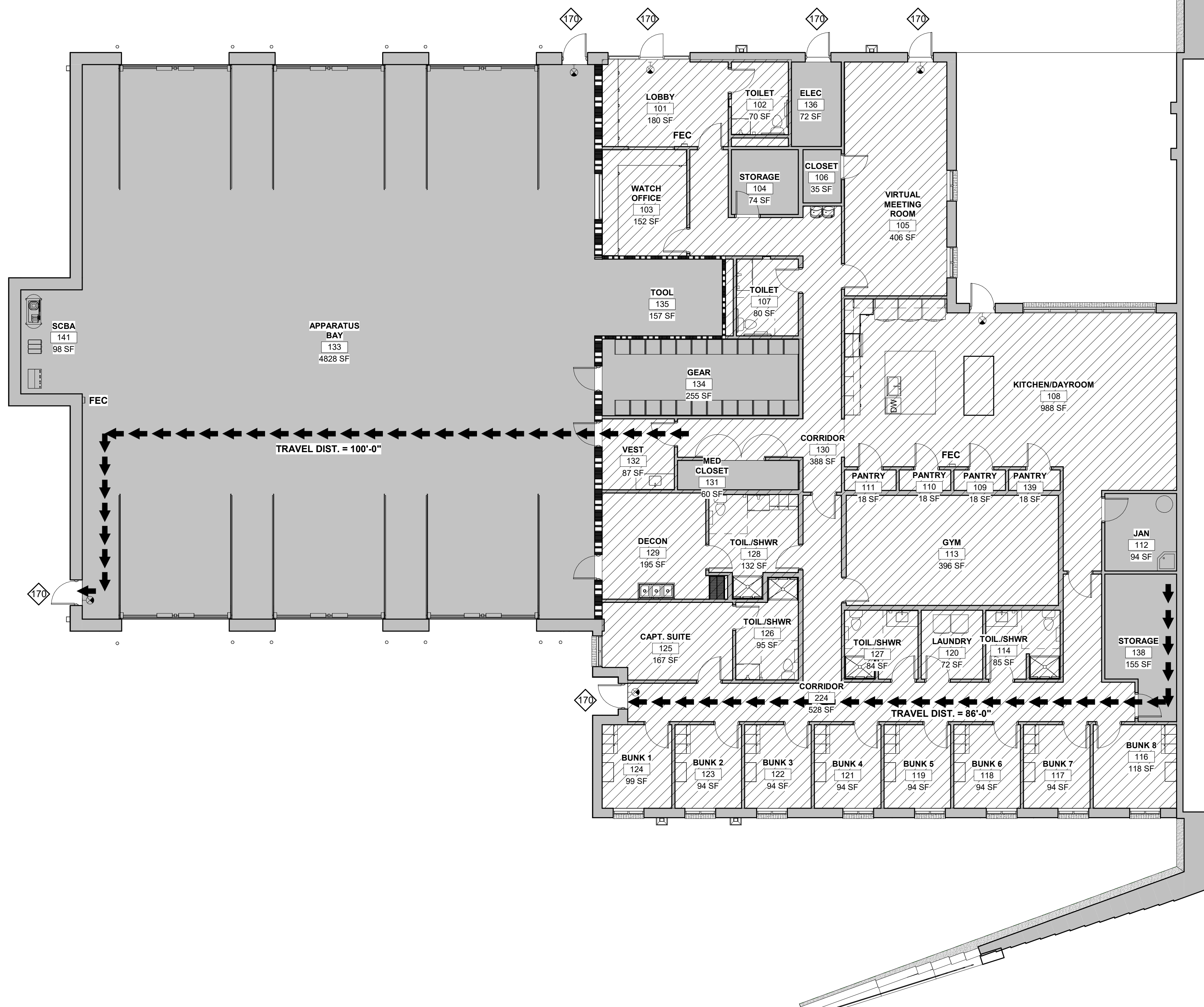


2

SCALE: 1/8" = 1'-0"

3

SCALE: 3/8" = 1'-0"



1

SCALE: 1/8" = 1'-0"

APPLICABLE CODES	
2024	INTERNATIONAL BUILDING CODE WITH GEORGIA AMENDMENTS
2018	INTERNATIONAL FIRE CODE WITH GEORGIA AMENDMENTS (2020)
2024	INTERNATIONAL PLUMBING CODE WITH GEORGIA AMENDMENTS
2024	INTERNATIONAL MECHANICAL CODE WITH GEORGIA AMENDMENTS
2024	INTERNATIONAL FUEL GAS CODE WITH GEORGIA AMENDMENTS
2023	NATIONAL ELECTRICAL CODE WITH GEORGIA AMENDMENTS (2026)
2015	INTERNATIONAL ENERGY CONSERVATION CODE WITH GEORGIA SUPPLEMENTS AND AMENDMENTS (2020)(2022) (2023)
2018	NFPA 101, LIFE SAFETY CODE WITH GEORGIA CURRENT AMENDMENTS
2019	NFPA 72, NATIONAL FIRE ALARM & SIGNALING CODE WITH GEORGIA CURRENT AMENDMENTS
2019	NFPA 13, STANDARD FOR THE INSTALLATION OF SPRINKLER SYSTEMS WITH GEORGIA CURRENT AMENDMENTS
2010	ADA STANDARDS, PER RULES AND REGULATIONS OF THE SAFETY FIRE COMMISSIONER 120-3-20A

CAPACITY PER LSC TABLE 7.3.3.1

STAIRS = 0.3"/PERSON
DOORS = 0.2"/PERSON
32"W DOOR = 30' CLR. = 150 CAPACITY
36"W DOOR = 34' CLR. = 170 CAPACITY
42"W DOOR = 40' CLR. = 200 CAPACITY
48"W DOOR = 46' CLR. = 230 CAPACITY
68"W DOOR = 64' CLR. = 320 CAPACITY
72"W DOOR = 68' CLR. = 340 CAPACITY
96"W DOOR = 92' CLR. = 460 CAPACITY

ALLOWABLE DISTANCE PER LSC 12.2.6
TRAVEL DISTANCE LIMIT - MAX. 300 FT. SPRINKLERED

COMMON PATH LIMIT - MAX. 100 FT. SPRINKLERED

DEAD END LIMIT - MAX. 50 FT. SPRINKLERED

PATH OF EGRESS WITHIN BUILDING ➡➡➡➡➡

TRAVEL DISTANCE & COMMON PATH (SEE NOTES ON PLANS)
NUMBER OF EXITS PER IBC 1006 & LSC 7.4.1.2

(00) ACTUAL EGRESS COUNT (00) EGRESS CAPACITY OF STAIR

(00) EGRESS CAPACITY OF EXIT

EXIT SIGNAGE (SHADING INDICATES FACE OF SIGN; ARROW SHOWN INDICATES DIRECTION)

PLUMBING FIXTURE REQUIREMENTS (IBC 2902.01)									
OCCUPANCY	WATER CLOSETS		LAVATORIES		DRINKING FOUNTAINS		SERVICE SINK		
BUSINESS	1 PER 25 FOR THE FIRST 50 AND 1 PER 50 FOR THE REMAINDER EXCEEDING 50		1 PER 40 FOR THE FIRST 80 AND 1 PER 80 FOR THE REMAINDER EXCEEDING 80		1 PER 100		1		
STORAGE	1 PER 100		1 PER 200		1 PER 200		1		
PLUMBING FIXTURE COUNT: (TOTAL OCCUPANCY 92)									
OCCUPANCY	WATER CLOSETS		LAVATORIES		DRINKING FOUNTAINS		SERVICE SINK		
BUSINESS 78 PERSONS	REQUIRED		REQUIRED		REQUIRED		REQUIRED		
	M F		M F		1		1		
	2 2		1 1						
STORAGE 14 PERSONS	REQUIRED		REQUIRED		REQUIRED		REQUIRED		
	M F		M F		NONE PER IPC 410.2		1		
	1 1		1 1						
TOTAL (BUSINESS + STORAGE)	REQUIRED	PROVIDED	REQUIRED	PROVIDED	REQUIRED	PROVIDED	REQUIRED	PROVIDED	
	M F	M F	M F	M F	1	1	2	2	
	3 3	4.5 4.5	2 2	2 2					
ADDITIONAL SINGLE OCCUPANT HCAP RESTROOMS	REQUIRED	PROVIDED	REQUIRED	PROVIDED					
	UNISEX	UNISEX	UNISEX	UNISEX					
	N/A	9	N/A	9					

The block contains five logos. At the top left is the logo for Georgia Civil Engineering, Landscape Architecture, and Land Surveying, featuring a stylized 'gc' in a black square followed by the text 'georgia civil', 'CIVIL ENGINEERING', 'LANDSCAPE ARCHITECTURE', and 'LAND SURVEYING'. Below this is the logo for Shear Structural, with 'SHEAR' in large green letters and 'STRUCTURAL' in smaller black letters. To the right is the logo for Total Engineers, featuring a stylized bridge graphic with the text 'TOTAL' and 'ENGINEERS' above it. At the bottom left is the logo for Electrical Engineers, featuring a stylized graphic of three vertical lines and a circle, with the text 'Electrical Engineers' below it.



FIRE STATION #23

City of Covington

HIGHWAY 36
COVINGTON, GA 30014

[illegible]

Drawn By Author	Checked By Checker
Date 12/15/2025	Job No. 25033

Sheet Title
**LEVEL 1 - LIFE
SAFETY**

Sheet No.

LS-1.01

NOT RELEASED FOR CONSTRUCTION



FIRE STATION #23

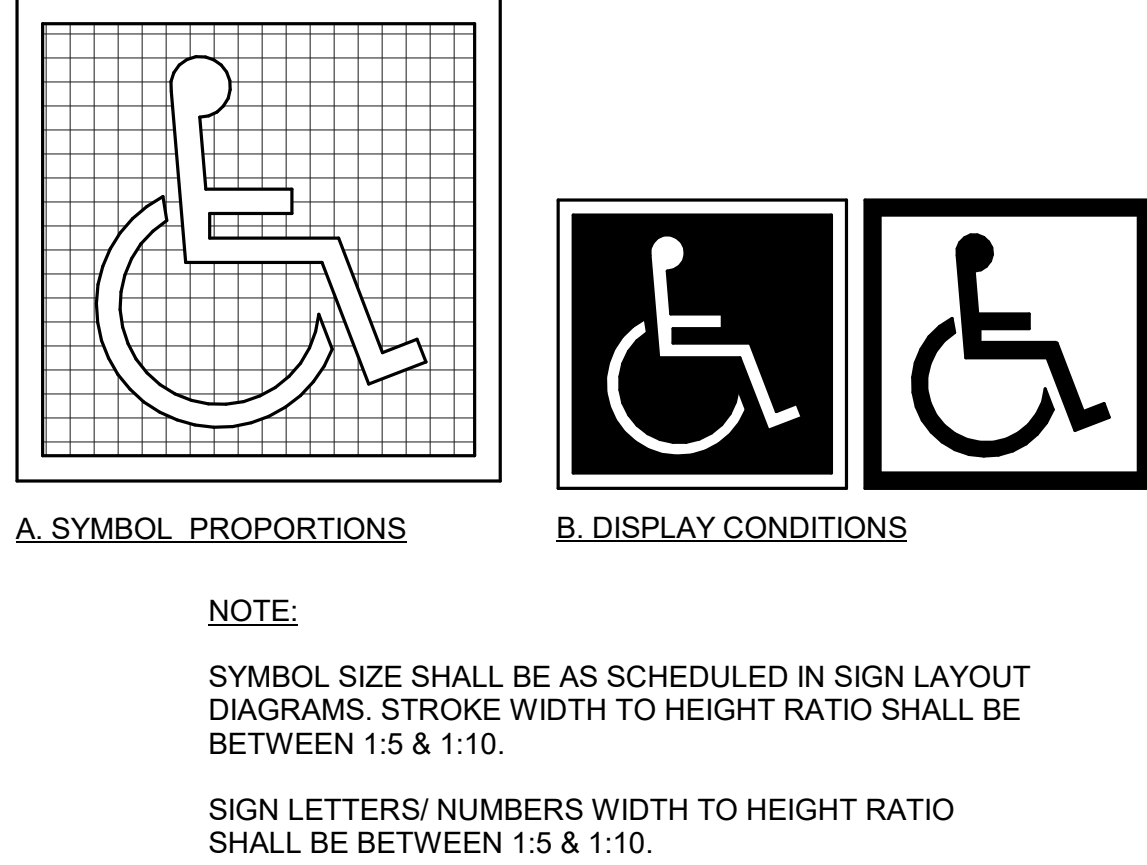
City of Covington

HIGHWAY 36
COVINGTON, GA 30014

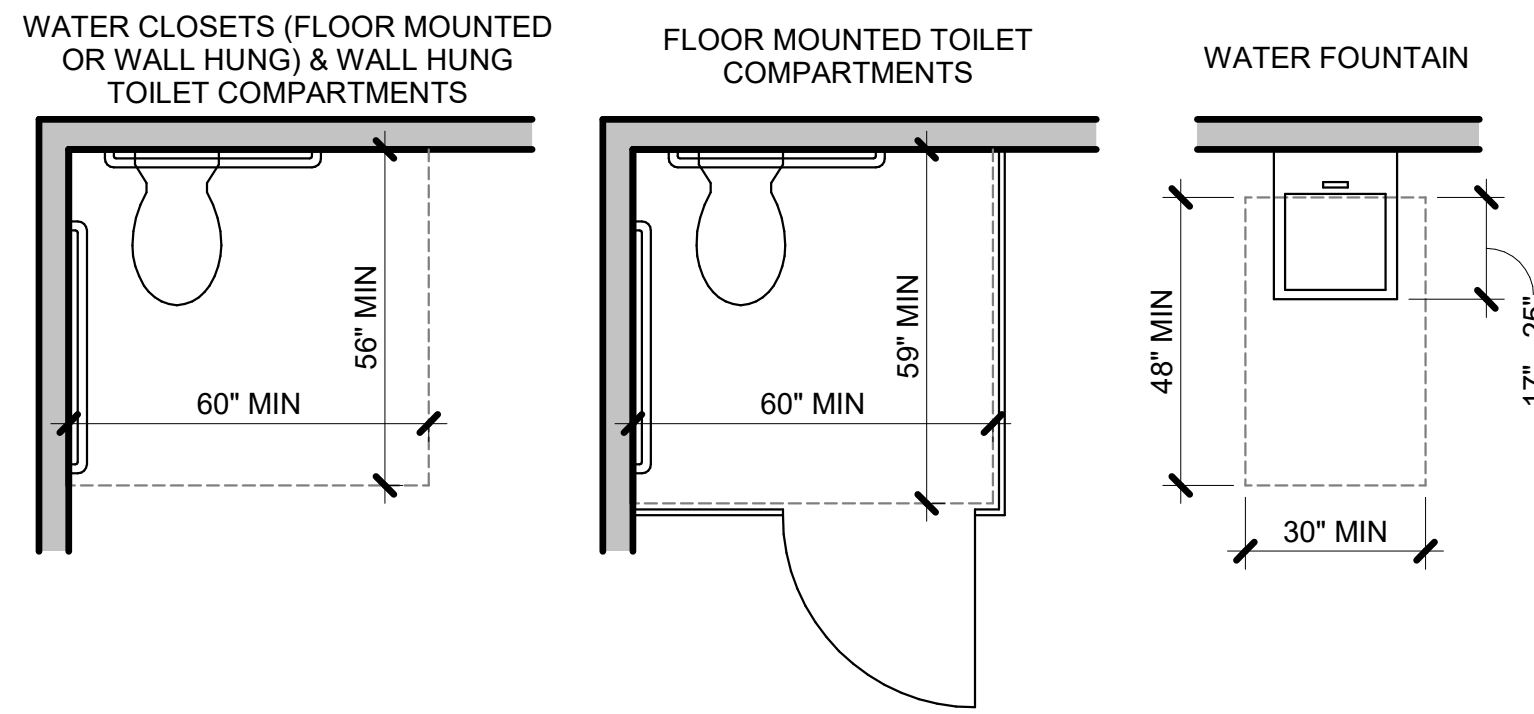
Sheet No.

LS-1.02

NOT RELEASED FOR CONSTRUCTION



INTERNATIONAL ACCESSIBILITY SYMBOL



5 ADA CLEARANCES

CHARACTER WIDTH

1:1
100%

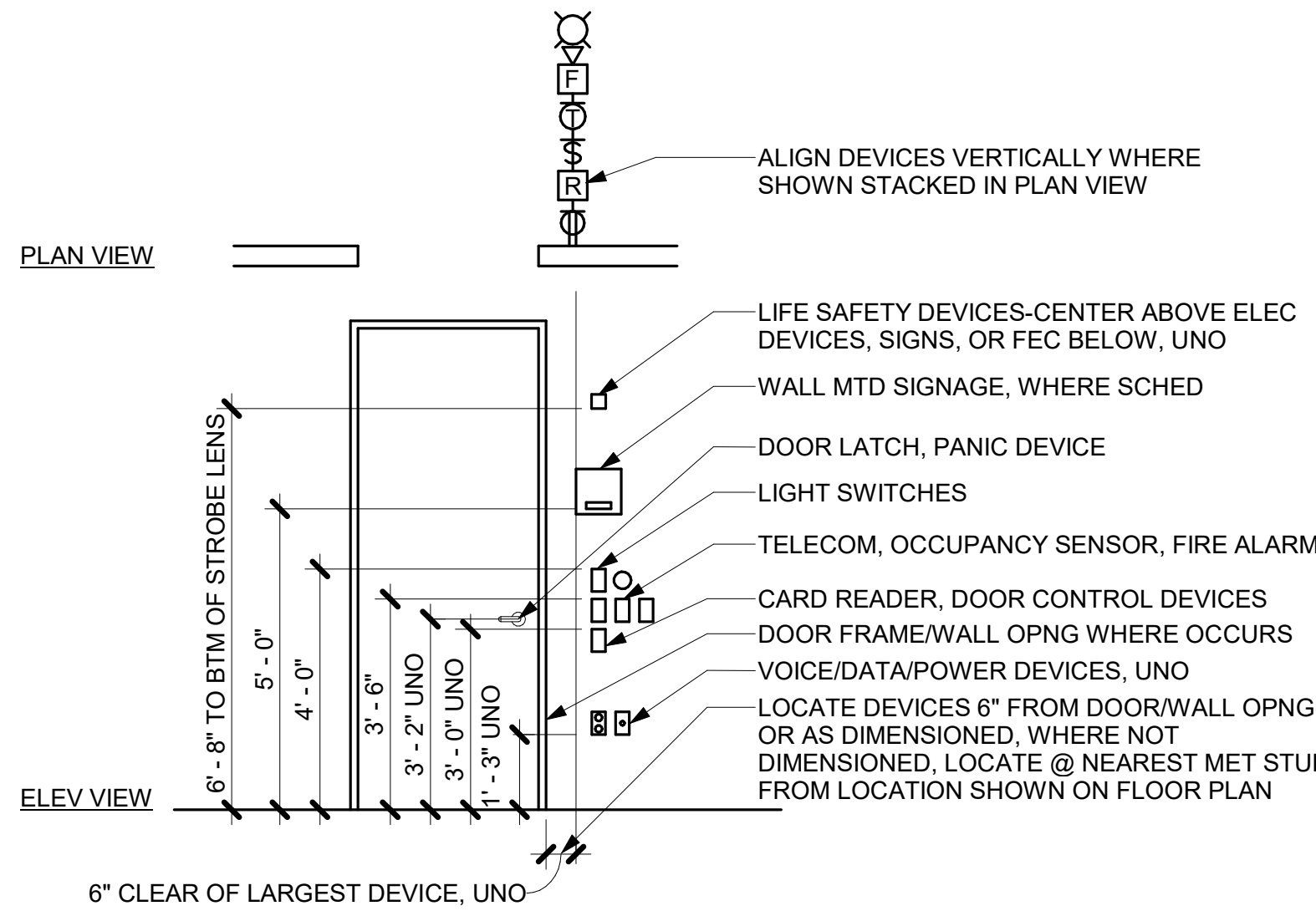
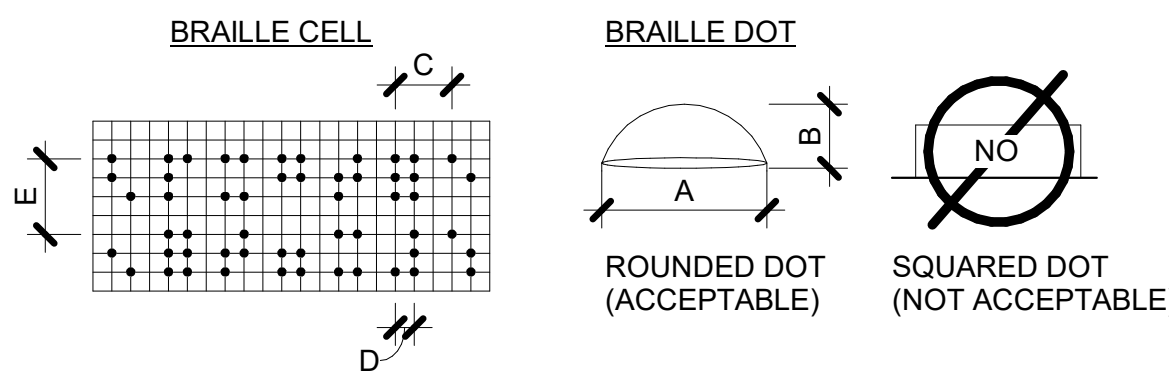
3:5
60%

STROKE WIDTH

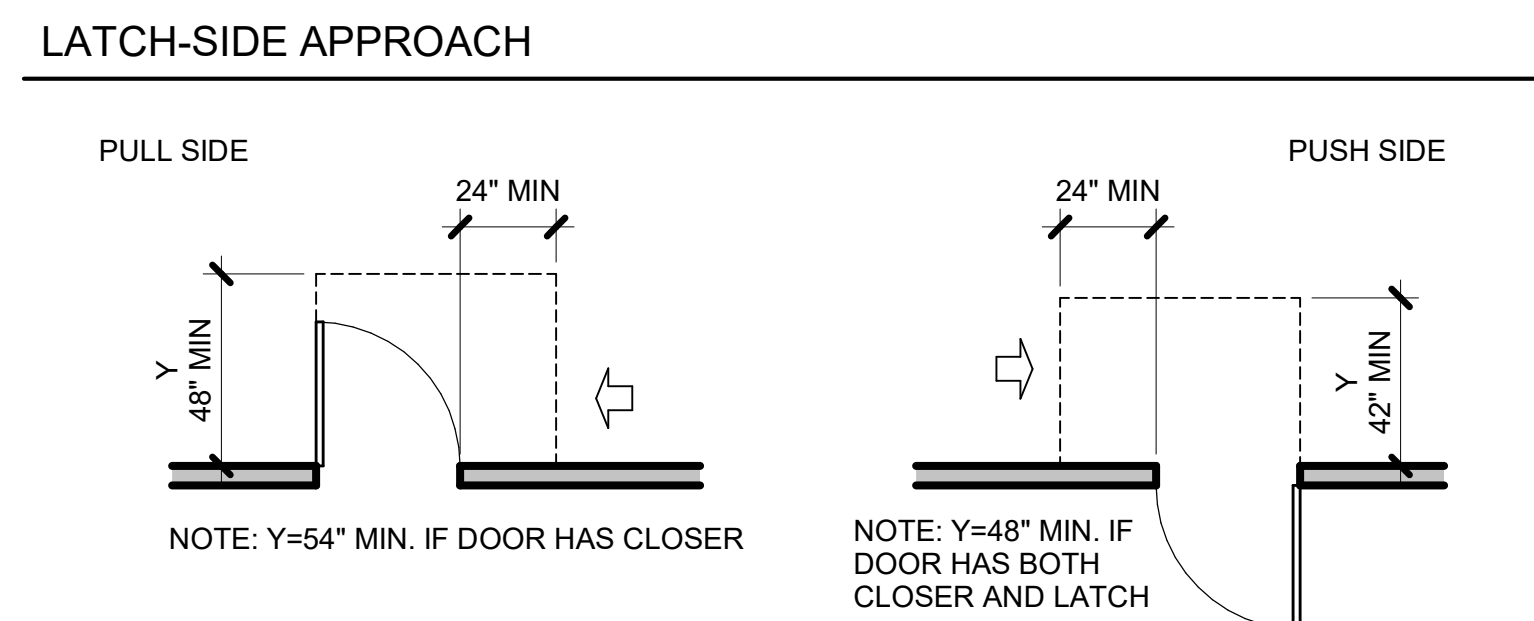
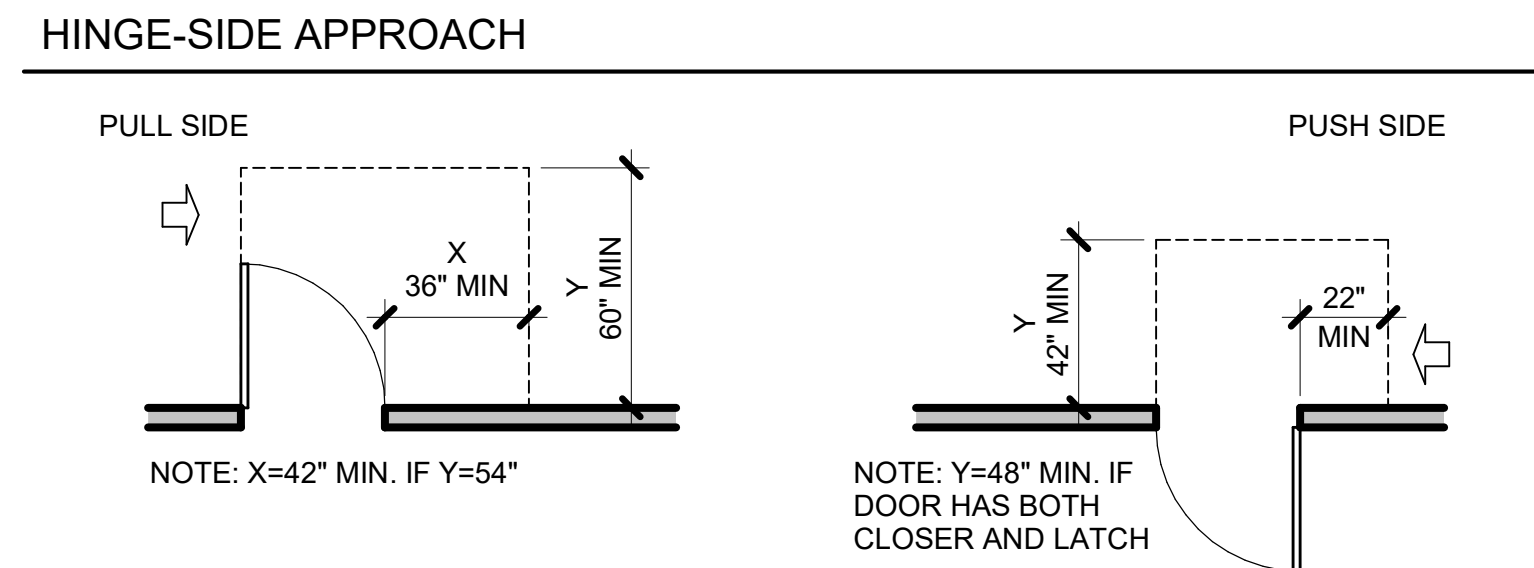
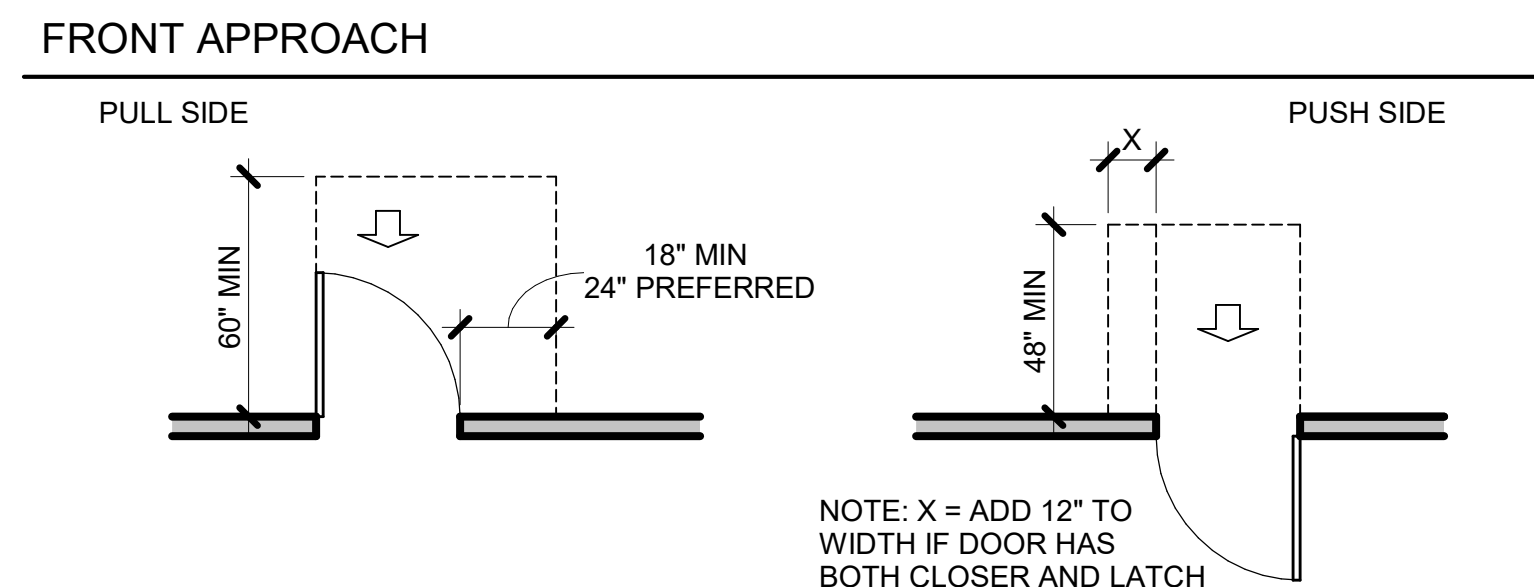
1:5
20%

1:10
10%

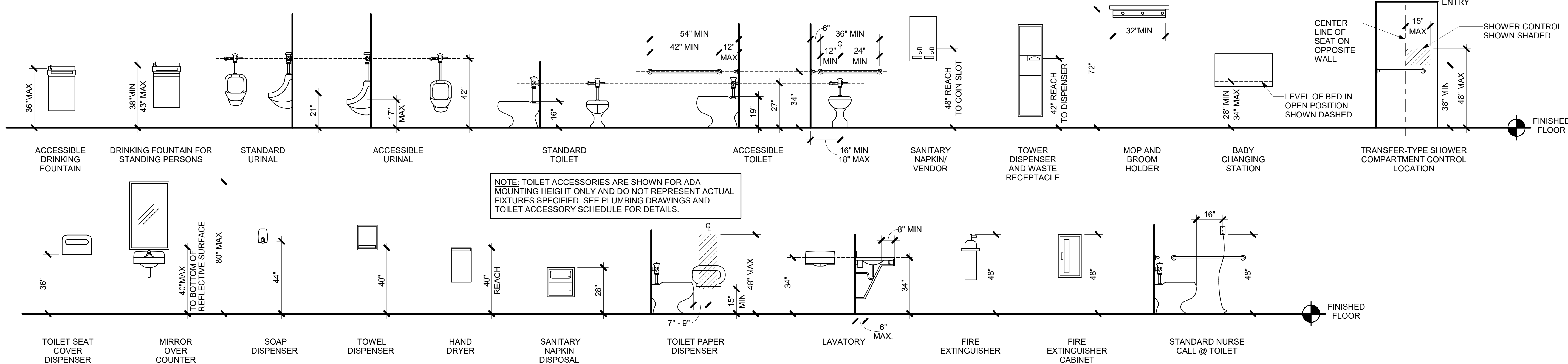
MEASUREMENT RANGE	MIN - MAX
A: DOT BASE DIAMETER	0.059" - 0.063"
B: DOT HEIGHT	0.025" - 0.037"
C: DISTANCE BETWEEN CORRESPONDING DOTS IN ADJACENT CELLS	0.241" - 0.300"
D: DISTANCE BETWEEN DOTS IN THE SAME CELL	0.090" - 0.100"
E: DISTANCE BETWEEN CORRESPONDING DOTS FROM ONE CELL DIRECTLY BELOW	0.395" - 0.400"



3 DEVICE ALIGNMENT DIAGRAM



2 DOOR CLEARANCES



1 MOUNTING HEIGHTS



FIRE STATION #23

City of Covington

HIGHWAY 36
COVINGTON, GA 30014

[illegible]

Drawn By Author	Checked By Checker
Date 12/15/2025	Job No. 25033

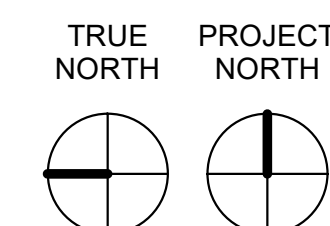
Sheet Title

**ADA REGULATORY
DETAILS &
DIAGRAMS**

Sheet No.

G-1.01

NOT RELEASED FOR CONSTRUCTION





- 
- JERICO**
design group
- 208 Pirkle Ferry Road, Suite C
Cumming, GA 30040

The logo for Shear Structural, featuring the word "SHEAR" in a large, bold, green sans-serif font, with a stylized black triangle integrated into the letter "E". Below "SHEAR" is the word "STRUCTURAL" in a smaller, black, all-caps sans-serif font.

FIRE STATION #23

City of Covington

HIGHWAY 36
COVINGTON, GA 30014

PRINT RECORD

[illegible]

Drawn By _____ Checked By _____
 Author _____ Checker _____

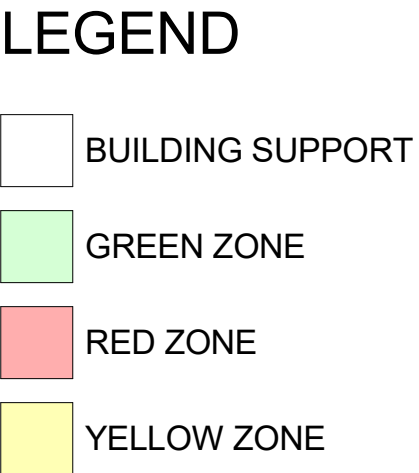
Date	Job No.
12/15/2025	25033

Sheet Title
**LEVEL 1 - DIMENSION
PLAN**

Sheet No.

A-1.01D

NOT RELEASED FOR CONSTRUCTION



FIRE STATION #23

City of Covington

HIGHWAY 36
COVINGTON, GA 30014

[illegible]

Drawn By	Checked By
Author	Checker
Date	Job No.
12/15/2025	25033

Sheet Title
**LEVEL 1 -
REFERENCE PLAN**

Sheet No.

A-1.01R

NOT RELEASED FOR CONSTRUCTION



1. ALL DOOR FRAMES IN METAL STUD WALLS SHALL BE SET 4" FROM PERPENDICULAR WALLS ADJACENT TO DOOR HINGE SIDE, U.N.O.
2. ALL DOOR FRAMES IN CMU WALLS SHALL BE SET 8" FROM PERPENDICULAR WALLS ADJACENT TO DOOR HINGE SIDE, U.N.O.
3. LOCATE CORNER GUARDS (C.G.) AS SHOWN ON THE PLANS.
4. THE FINISH ELEVATIONS OF EXIT LANDINGS SHALL NOT EXCEED A MAXIMUM OF 1/2" BELOW THRESHOLDS.

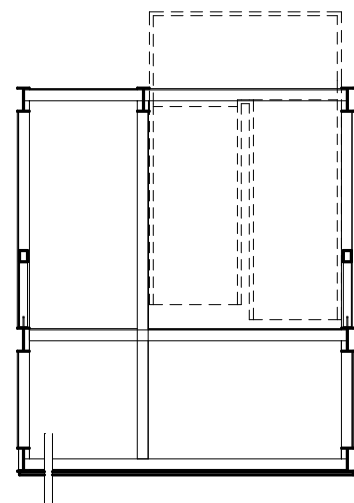


HIGHWAY 36
COVINGTON, GA 30014

[illegible]

NOT RELEASED FOR CONSTRUCTION





LEVEL 1 - REFLECTED CEILING PLAN

SCALE: 1/8" = 1'-0"



JERICO
design group

208 Pirkle Ferry Road, Suite C
Cumming, GA 30040



SHEAR
STRUCTURAL



FIRE STATION #23

City of Covington

HIGHWAY 36
COVINGTON, GA 30014

PRINT RECORD

[illegible]

Drawn By	Checked By
Author	Checker

Date	Job No.
12/15/2025	25033

Sheet Title

**LEVEL 1 -
REFLECTED CEILING
PLAN**

Sheet No.

A-2.01

NOT RELEASED FOR CONSTRUCTION



RCP SHOWN ON THIS DOCUMENT IS FOR GRAPHIC ILLUSTRATION ONLY AND SHALL NOT BE USED AS AN ACCURATE REPRESENTATION OF MECHANICAL, ELECTRICAL AND PLUMBING SCOPE OF WORK. REFERENCE MECHANICAL, ELECTRICAL AND PLUMBING DRAWINGS AND SPECIFICATIONS FOR SCOPE OF WORK.

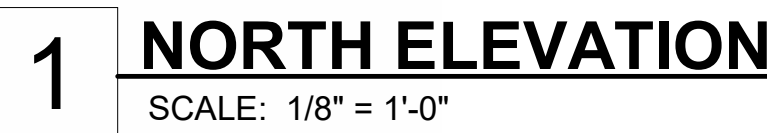
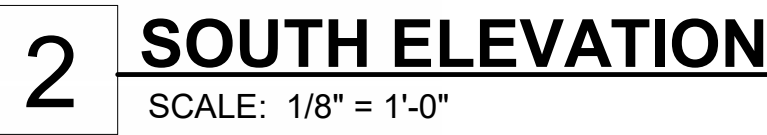
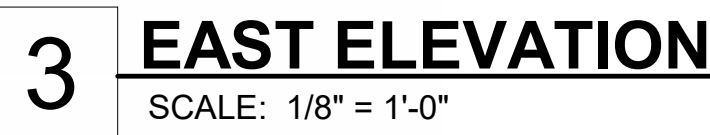
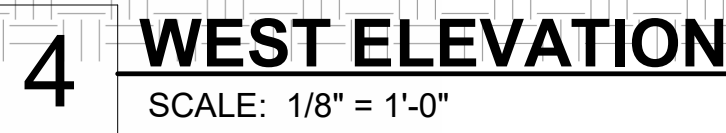
The block contains four logos. At the top is the Jericho Design Group logo, which features a blue square with a white lowercase 'j' inside a circle, and the text 'JERICHO design group' below it. Below this is the Georgia Civil Engineers logo, which includes the letters 'gc' in a stylized font and the text 'georgia civil CIVIL ENGINEERING LANDSCAPE ARCHITECTURE LAND SURVEYING'. Next is the Shear Structural logo, with the word 'SHEAR' in large green letters and 'STRUCTURAL' in smaller black letters below it. At the bottom is the Total Engineers logo, which features a stylized graphic of a bridge or structure and the text 'TOTAL ENGINEERS'.



HIGHWAY 36
COVINGTON, GA 30014

Drawn By	Checked By
Author	Checker
Date	Job No.
12/15/2025	25033

NOT RELEASED FOR CONSTRUCTION



JERICO
design group

208 Pirkle Ferry Road, Suite C
Cumming, GA 30040



FIRE STATION #23

City of Covington

HIGHWAY 36
COVINGTON, GA 30014

[illegible]

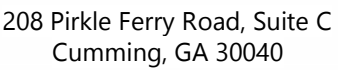
Drawn By Author	Checked By Checker
Date 12/15/2025	Job No. 25033

Sheet Title
**EXTERIOR
ELEVATIONS**

Sheet No.

A-4.01

NOT RELEASED FOR CONSTRUCTION

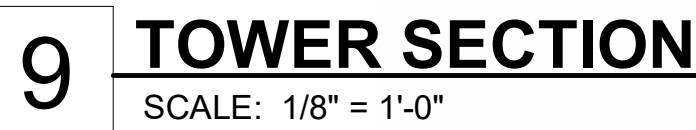


FIRE STATION #23

City of Covington

HIGHWAY 36
COVINGTON, GA 30014

KEY NOTES - EXTERIOR ELEVATIONS	
KEY NOTE #	DESCRIPTION
AS-1	ASPHALT SHINGLES - GAF TIMBERLINE WEATHERED WOOD
BR-1	BRICK VENEER - MOSSTOWN BY CHEROKEE BRICK
BR-2	BRICK VENEER - VELOUR BROWN BY CHEROKEE BRICK
FC-1	FIBER CEMENT BOARD SIDING - HARDIE COBBLE STONE
FC-2	FIBER CEMENT TRIM & FASCIA BOARD - HARDIE AGED PEWTER
GL-1	INSULATED, LOW-E STOREFRONT GLAZING
MTL-1	METAL - GUTTERS & DOWNSPOUTS - DARK BRONZE
MTL-2	PREFINISHED ALUMINUM STOREFRONT SYSTEM - KAWNEER DARK BRONZE
MTL-3	METAL - PAINTED STEEL HANDRAILS
MTL-4	METAL - PREFABRICATED CANOPY
MTL-5	METAL - HM DOORS AND FRAMES
MTL-6	METAL - OVERHEAD DOORS - COLONIAL RED
WD-1	PRESSURE-TREATED WOOD VENEER - CEDAR STAIN

[illegible]

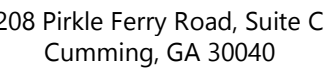
Drawn By Author	Checked By Checker
Date 12/15/2025	Job No. 25033

Sheet Title
**EXTERIOR
ELEVATIONS**

Sheet No.

A-4.02

NOT RELEASED FOR CONSTRUCTION



City of Covington

HIGHWAY 36
COVINGTON, GA 30014

PRINT RECORD

[illegible]

Drawn By _____ Checked By _____
 Author _____ Checker _____

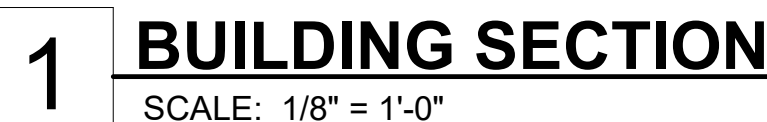
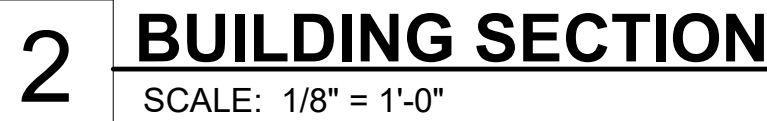
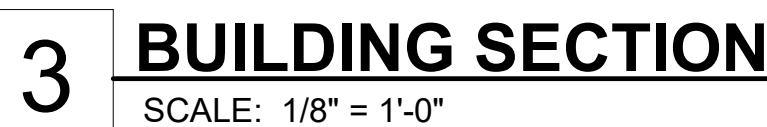
Date	Job No.
12/15/2025	25033

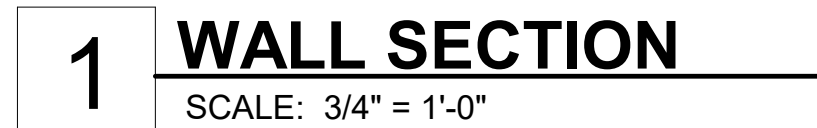
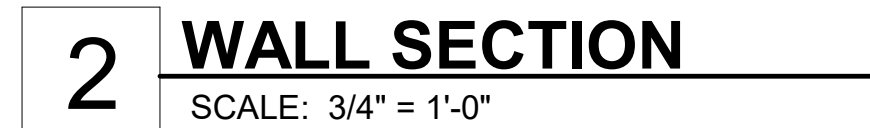
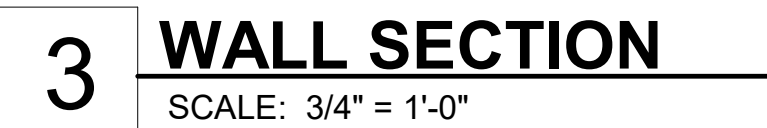
Sheet Title
BUILDING SECTIONS

Sheet No.

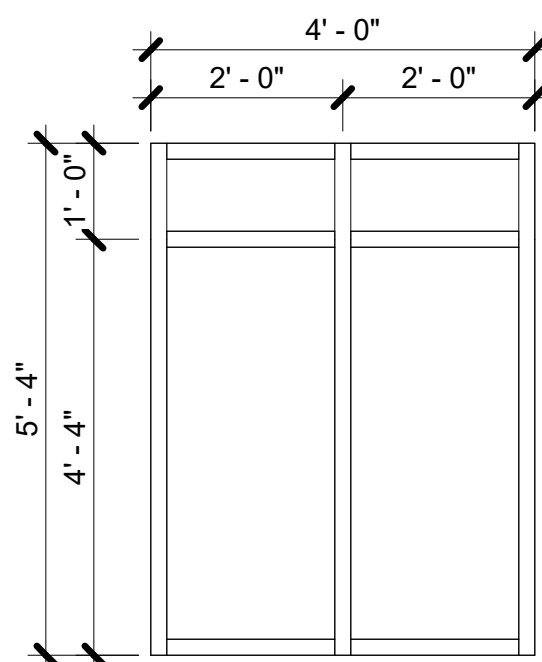
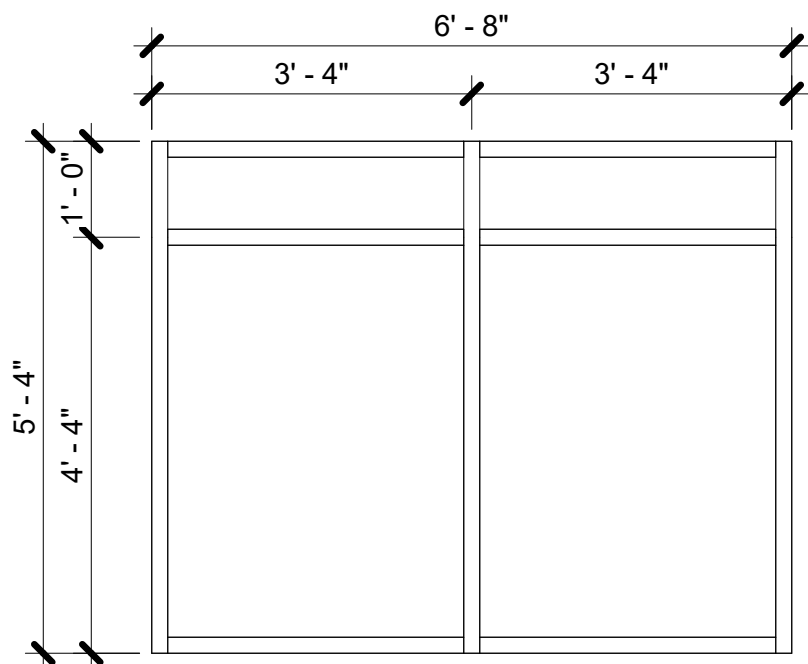
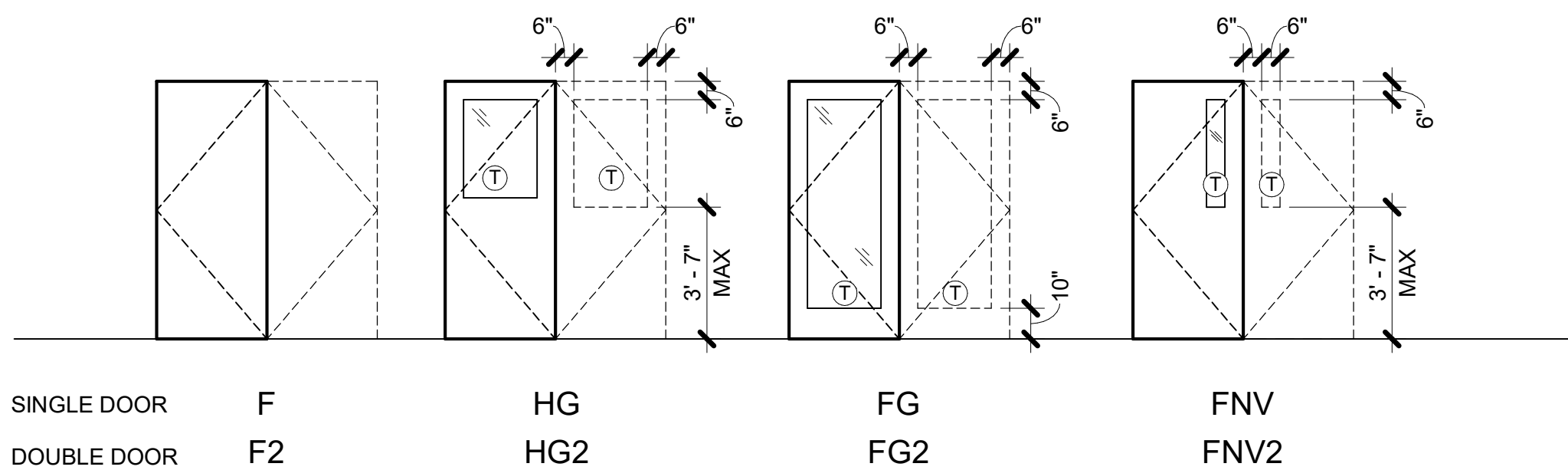
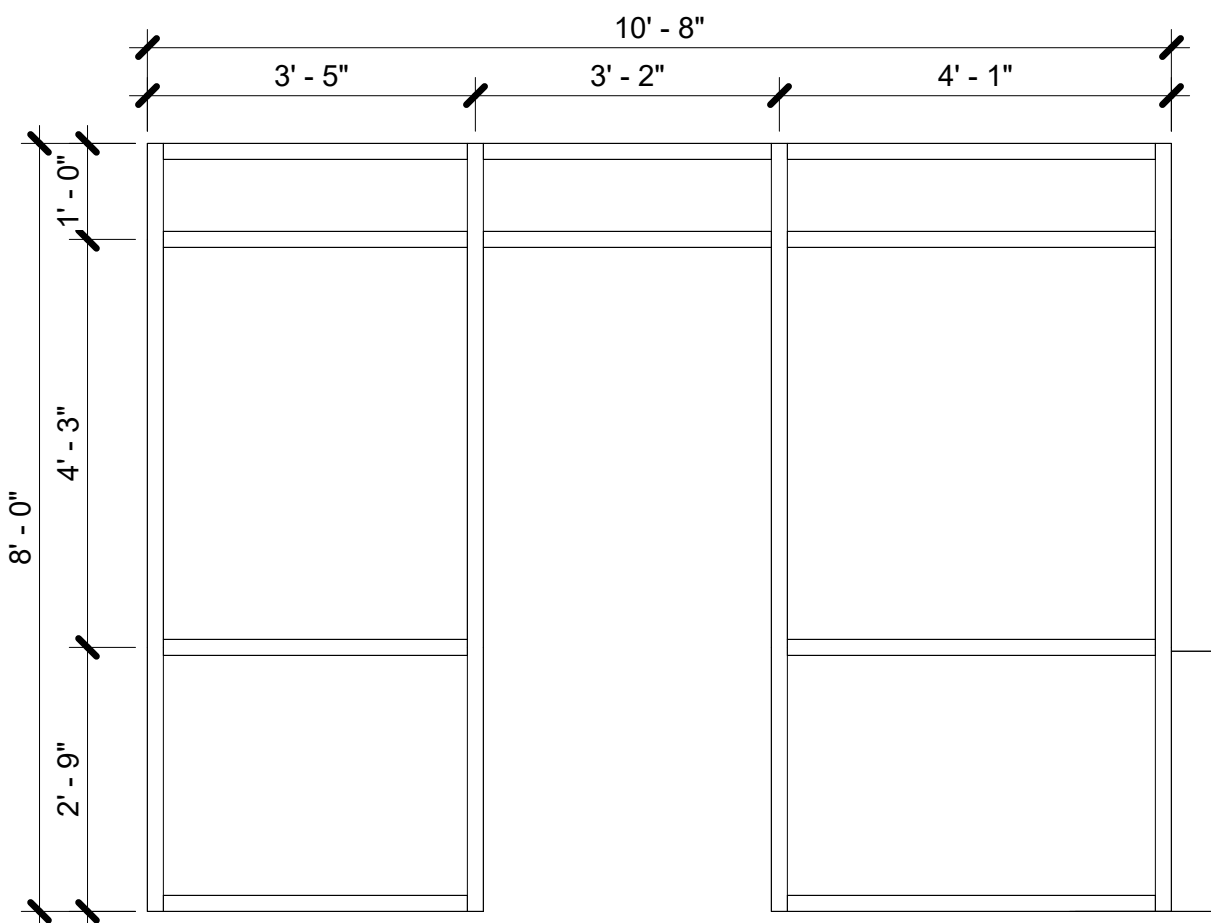
A-5.01

NOT RELEASED FOR CONSTRUCTION

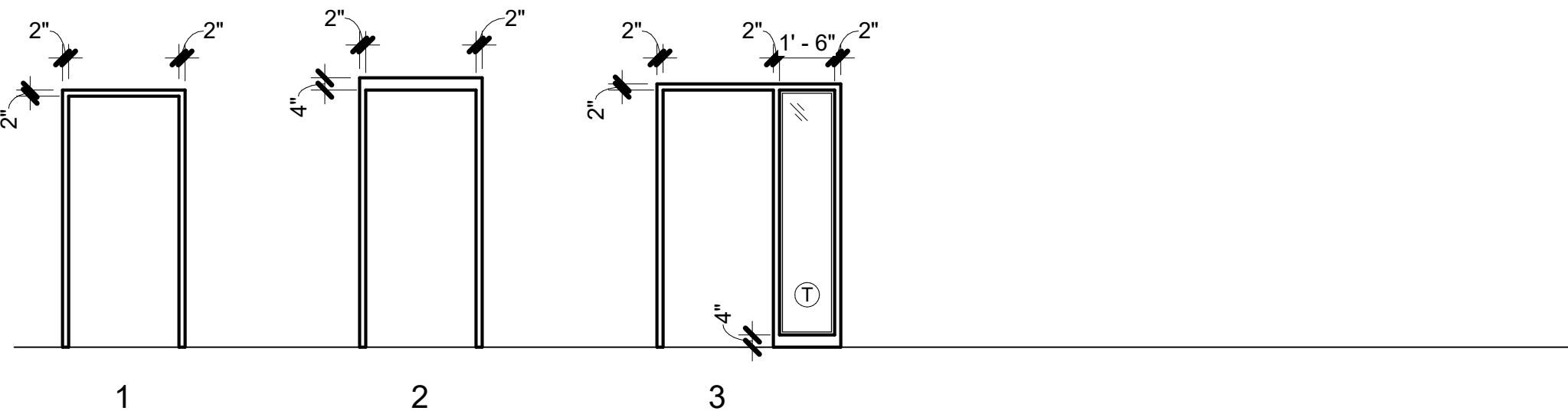




DOOR SCHEDULE														
NO.	FIRE RATING	DOOR						FRAME			DETAILS			NOTES
		ELEVATION	WIDTH	HEIGHT	THICK.	MATL.	FINISH	ELEVATION	MATL.	FINISH	HEAD	JAMB	SILL	
901		F	3'-0"	7'-0"	0'-1 3/4"	HM	PTD	1	HM	PTD	--	--	--	
902		F	3'-0"	7'-0"	0'-1 3/4"	HM	PTD	1	HM	PTD	--	--	--	
903		F	3'-0"	7'-0"	0'-1 3/4"	HM	PTD	1	HM	PTD	--	--	--	
904		F	3'-0"	7'-0"	0'-1 3/4"	HM	PTD	1	HM	PTD	--	--	--	
905		F	3'-0"	7'-0"	0'-1 3/4"	HM	PTD	1	HM	PTD	--	--	--	
906		F	3'-0"	7'-0"	0'-1 3/4"	HM	PTD	1	HM	PTD	--	--	--	
909		F	3'-0"	7'-0"	0'-1 3/4"	HM	PTD	1	HM	PTD	--	--	--	
883		F	3'-0"	7'-0"	0'-1 3/4"	HM	PTD	1	HM	PTD	--	--	--	
884		F	3'-0"	7'-0"	0'-1 3/4"	HM	PTD	1	HM	PTD	--	--	--	
896		F	3'-0"	7'-0"	0'-1 3/4"	HM	PTD	1	HM	PTD	--	--	--	
911		F	3'-0"	7'-0"	0'-1 3/4"	HM	PTD	1	HM	PTD	--	--	--	
		FG	3'-1"	6'-11"	0'-1 3/4"	ALUM	MATCH EXISTING	F2	ALUM	MATCH EXISTING	--	--	--	
917		F	3'-0"	7'-0"	0'-1 3/4"	HM	PTD	2	HM	PTD	--	--	--	
918		F	3'-0"	7'-0"	0'-1 3/4"	HM	PTD	1	HM	PTD	--	--	--	
919		F	3'-0"	7'-0"	0'-1 3/4"	HM	PTD	1	HM	PTD	--	--	--	
920		F	3'-0"	7'-0"	0'-1 3/4"	HM	PTD	1	HM	PTD	--	--	--	
921		F	3'-0"	7'-0"	0'-1 3/4"	HM	PTD	1	HM	PTD	--	--	--	
922		F	3'-0"	7'-0"	0'-1 3/4"	HM	PTD	1	HM	PTD	--	--	--	
923		F	3'-0"	7'-0"	0'-1 3/4"	HM	PTD	1	HM	PTD	--	--	--	
924		F	3'-0"	7'-0"	0'-1 3/4"	HM	PTD	1	HM	PTD	--	--	--	
925		F	3'-0"	7'-0"	0'-1 3/4"	HM	PTD	1	HM	PTD	--	--	--	
926		F	3'-0"	7'-0"	0'-1 3/4"	HM	PTD	1	HM	PTD	--	--	--	
927		F	3'-0"	7'-0"	0'-1 3/4"	HM	PTD	1	HM	PTD	--	--	--	
928		F	3'-0"	7'-0"	0'-1 3/4"	HM	PTD	1	HM	PTD	--	--	--	
929		F	3'-0"	7'-0"	0'-1 3/4"	HM	PTD	1	HM	PTD	--	--	--	
930		F	3'-0"	7'-0"	0'-1 3/4"	HM	PTD	1	HM	PTD	--	--	--	
931		F	3'-0"	7'-0"	0'-1 3/4"	HM	PTD	1	HM	PTD	--	--	--	
7		FG3	6'-0"	6'-11"	0'-1 3/4"	ALUM	GL	--	ALUM	ANODZ	--	--	--	PAIR OF DOORS
939		F2	6'-0"	7'-0"	0'-1 3/4"	HM	PTD	1	HM	PTD	--	--	--	
940		F	3'-0"	7'-0"	0'-1 3/4"	HM	PTD	1	HM	PTD	--	--	--	
941		F	3'-0"	7'-0"	0'-1 3/4"	HM	PTD	1	HM	PTD	--	--	--	
942		F	3'-0"	7'-0"	0'-1 3/4"	HM	PTD	2	HM	PTD	--	--	--	
944		FG	3'-1"	6'-11"	0'-1 3/4"	ALUM	MATCH EXISTING	F2	ALUM	MATCH EXISTING	--	--	--	
		FG	3'-0"	6'-11"	0'-1 3/4"	ALUM	MATCH EXISTING	F2	ALUM	MATCH EXISTING	--	--	--	



WINDOW TYPE 1/1A
SCALE: 1/2" = 1'-0"



FRAME ELEVATIONS

SCALE : 1/4"=1'-0"

GENERAL NOTES	ABBREVIATIONS LEGEND										
<ul style="list-style-type: none">* REFER TO ADA REGULATORY DIAGRAMS FOR MORE INFORMATION1. SEE GENERAL SPECIFICATIONS FOR DOOR AND FRAME FINISHES.ALL DOOR HARDWARE SHALL BE HANDICAP ACCESSIBLE, COMPLYING WITH 2010 ADA STANDARDS FOR ACCESSIBLE DESIGN.3. WHERE DISCREPANCIES OCCUR BETWEEN THE DOOR SCHEDULE NOTES AND HARDWARE SPECIFICATIONS, NOTIFY THE ARCHITECT OF DISCREPANCIES TO RECEIVE DIRECTION ON HOW TO PROCEED.4. TIE MAGNETIC LOCK INTO FIRE ALARM.5. REFER TO THE PARTITION TYPE OR APPLICABLE WALL SECTION AND THEN TO TYPICAL DOOR DETAILS FOR APPROPRIATE DETAIL.ALL EXTERIOR HOLLOW METAL DOORS TO BE INSULATED AND GALVANIZED.ALL EXTERIOR DOORS TO BE WEATHER STRIPPED AND HAVE CLOSERS.ALL FIRE RATED DOORS TO HAVE CLOSERS.PROVIDE METAL TRANSITION STRIPS AT THE FOLLOWING FLOORING TRANSITIONS: WOOD-PORCELAIN, WOOD-CARPET, CARPET-PORCELAIN.	<table><tr><th>DOOR MATERIAL TYPE</th><th>FINISH TYPE</th></tr><tr><td>ALUM - ALUMINUM</td><td>STD - STAIN</td></tr><tr><td>HL - HOLLOW METAL</td><td>PTD - PTD</td></tr><tr><td>PLAM - PLASTIC LAM</td><td>PF - PREFINISHED</td></tr><tr><td>SCWD - SOLID CORE WOOD</td><td></td></tr></table>	DOOR MATERIAL TYPE	FINISH TYPE	ALUM - ALUMINUM	STD - STAIN	HL - HOLLOW METAL	PTD - PTD	PLAM - PLASTIC LAM	PF - PREFINISHED	SCWD - SOLID CORE WOOD	
DOOR MATERIAL TYPE	FINISH TYPE										
ALUM - ALUMINUM	STD - STAIN										
HL - HOLLOW METAL	PTD - PTD										
PLAM - PLASTIC LAM	PF - PREFINISHED										
SCWD - SOLID CORE WOOD											
	<table><tr><th>FRAME MATERIAL TYPE</th><th>GLAZING TYPE</th></tr><tr><td>ALUM - ALUMINUM</td><td>T - CLEAR TEMPERED GLASS</td></tr><tr><td>HL - HOLLOW METAL</td><td>TT - TINTED & TEMPERED GLASS</td></tr><tr><td>STL - STEEL</td><td>IT - INSULATED TEMPERED GLASS</td></tr><tr><td>WD - WOOD</td><td></td></tr></table>	FRAME MATERIAL TYPE	GLAZING TYPE	ALUM - ALUMINUM	T - CLEAR TEMPERED GLASS	HL - HOLLOW METAL	TT - TINTED & TEMPERED GLASS	STL - STEEL	IT - INSULATED TEMPERED GLASS	WD - WOOD	
FRAME MATERIAL TYPE	GLAZING TYPE										
ALUM - ALUMINUM	T - CLEAR TEMPERED GLASS										
HL - HOLLOW METAL	TT - TINTED & TEMPERED GLASS										
STL - STEEL	IT - INSULATED TEMPERED GLASS										
WD - WOOD											



FIRE STATION #23

City of Covington

HIGHWAY 36
COVINGTON, GA 30014

[illegible]

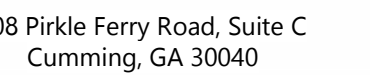
Drawn By	Checked By
Author	Checker
Date	Job No.
12/15/2025	25033

Sheet Title
**DOOR & WINDOW
SCHEDULE AND
ELEVATIONS**

Sheet No.

A-7.01

NOT RELEASED FOR CONSTRUCTION



HIGHWAY 36
COVINGTON, GA 30014

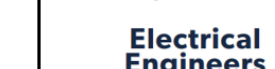
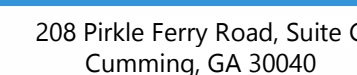
PRINT RECORD

[illegible]

Job No. 05022

A-9.01

NOT RELEASED FOR CONSTRUCTION



FIRE STATION #23

City of Covington

HIGHWAY 36
COVINGTON, GA 30014

[PRINT RECORD](#)[illegible]

Drawn By	Checked By
Author	Checker

Date	Job No.
12/15/2025	25033

Sheet Title
EXTERIOR 3D VIEWS

Sheet No.

A-9.02

NOT RELEASED FOR CONSTRUCTION

[illegible]

JERICO
design group

208 Pirkle Ferry Road, Suite C
Cumming, GA 30040



HIGHWAY 36
COVINGTON, GA 30014

Drawn By Author	Checked By Checker
Date 12/15/2025	Job No. 25033

NOT RELEASED FOR CONSTRUCTION

ROOM FINISH SCHEDULE							
ROOM NO	ROOM NAME	AREA	FINISHES			COMMENTS	
			FLOOR	BASE	WALL		CEILING
133	APPARATUS BAY	4828 SF	EP-1	EP-1	P-1	O.T.S.	
134	GEAR	255 SF	SC-1	RB-1	P-1	O.T.S.	
135	TOOL	157 SF	EP-1	EP-1	P-1	O.T.S.	
136	ELEC	72 SF	SC-1	RB-1	P-1	ACT-1	
138	STORAGE	155 SF	PC-1	RB-1	P-1	ACT-1	
139	PANTRY	18 SF	PC-1	RB-1	P-1	ACT-1	
141	SCBA	98 SF	EP-1	EP-1	P-1	ACT-1	
142	STORAGE	1636 SF	CPT-1	RB-1	P-1	ACT-1	
224	CORRIDOR	528 SF	PC-1	RB-1	P-1	ACT-1	
LEVEL 2							
201	LOBBY	299 SF	CT-1	CTB-1	P-1	GWB/WD-1	***ADD. ALT. WOOD PANELING @ CEILING
202	PD	553 SF	--	--	--	--	SHELL ONLY; BUILDOUT AT LATER DATE
203	TOILET	89 SF	--	--	--	--	SHELL ONLY; BUILDOUT AT LATER DATE
204	IT	92 SF	PC-1	RB-1	P-1	ACT-1	
205	CORRIDOR	363 SF	PC-1	RB-1	P-1	ACT-1	
206	EVIDENCE	78 SF	PC-1	RB-1	P-1	ACT-1	
207	OFFICE 5	90 SF	PC-1	RB-1	P-1	ACT-1	
208	FM OFFICE	276 SF	PC-1	RB-1	P-1	ACT-1	
209	OFFICE 1	132 SF	PC-1	RB-1	P-1	ACT-1	
210	OFFICE 2	131 SF	PC-1	RB-1	P-1	ACT-1	
211	OFFICE 3	132 SF	PC-1	RB-1	P-1	ACT-1	
212	OFFICE 4	131 SF	PC-1	RB-1	P-1	ACT-1	
214	DAYROOM/ KITCHEN	514 SF	PC-1	RB-1	P-1	O.T.S.	DRYFALL CEILING; ***ADD. ALT. ACOUSTICAL PANELS
215	TOILET	84 SF	PC-1	CTB-2	P-1	GWB	WALL TILE UP TO 4'-0"
216	JAUN	74 SF	PC-1	RB-1	P-1	ACT-1	
217	DAYROOM/ KITCHEN	458 SF	PC-1	RB-1	P-1	O.T.S.	DRYFALL CEILING; ***ADD. ALT. ACOUSTICAL PANELS
218	TOILET	86 SF	PC-1	CTB-2	P-1	GWB	WALL TILE UP TO 4'-0"
219	MED CLOSET	50 SF	PC-1	RB-1	P-1	ACT-1	
220	BUNK	101 SF	PC-1	RB-1	P-1	ACT-1	
221	BUNK	103 SF	PC-1	RB-1	P-1	ACT-1	
222	ELEC	58 SF	PC-1	RB-1	P-1	O.T.S.	



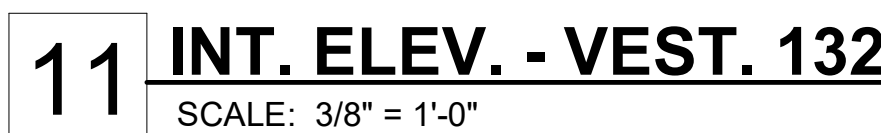
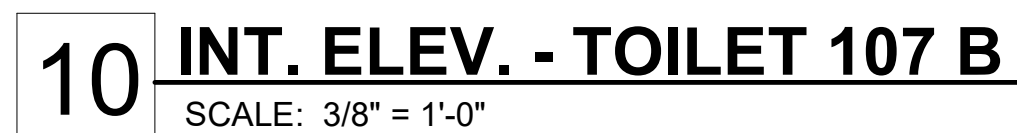
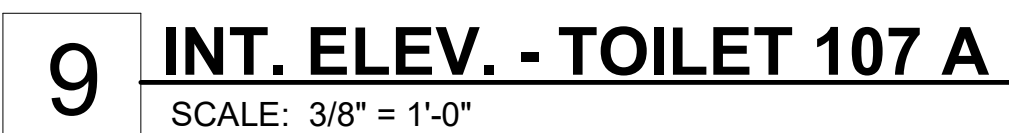
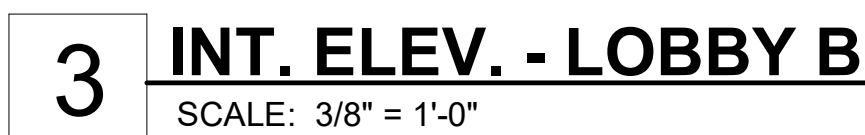
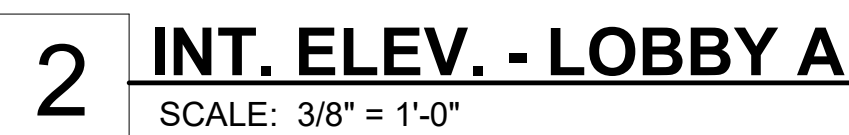
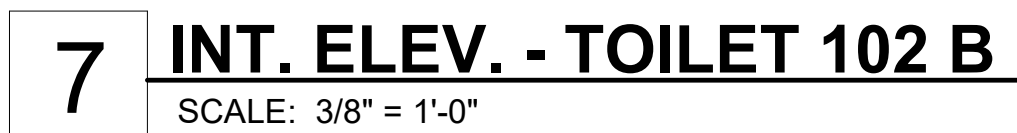
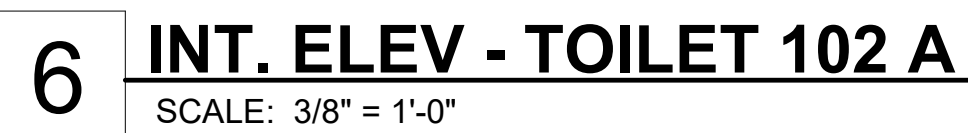
JERICO
design group

208 Pirkle Ferry Road, Suite C
Cumming, GA 30040

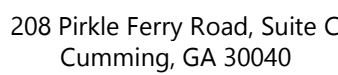


HIGHWAY 36
COVINGTON, GA 30014

ID-2.02
NOT RELEASED FOR CONSTRUCTION



NOT RELEASED FOR CONSTRUCTION



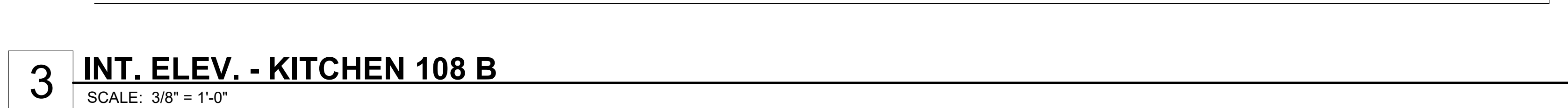
City of Covington

HIGHWAY 36
COVINGTON, GA 30014

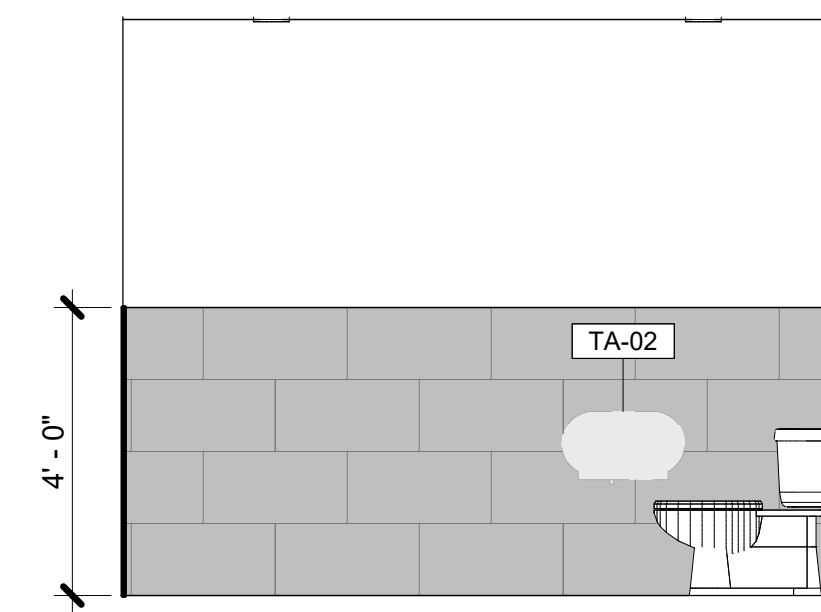
Drawn By Author	Checked By Checker
Date 12/15/2025	Job No. 25033

1. *Journal of the American Medical Association*, 2000; 283: 2689-2693.

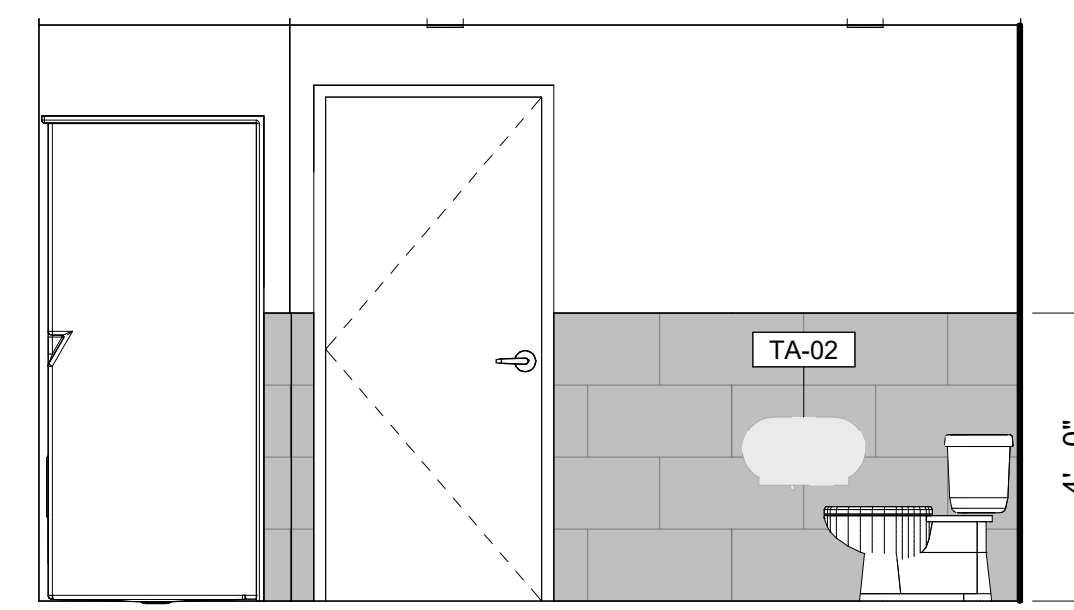
NOT RELEASED FOR CONSTRUCTION



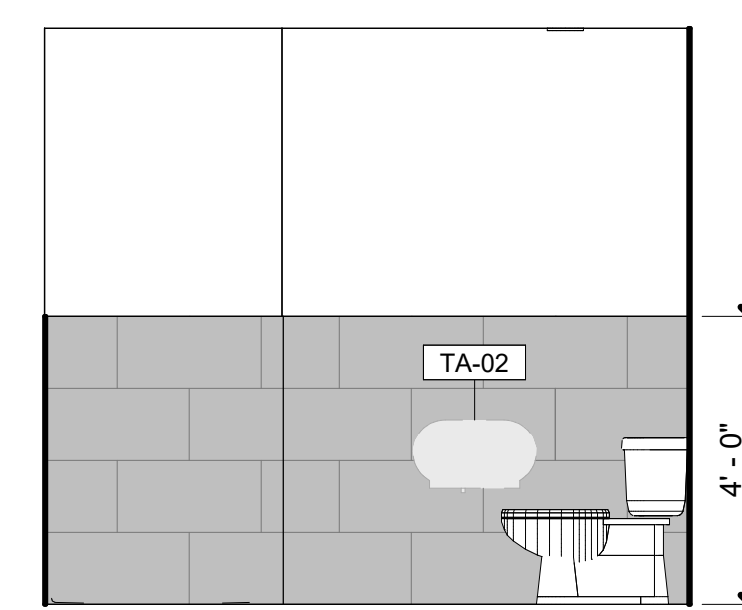
- ## MILLWORK GENERAL NOTES
1. REFER TO INTERIOR ELEVATIONS, WHICH IDENTIFY THE ROOM AND WALL (NORTH, SOUTH, EAST OR WEST) ON WHICH THE CABINETRY IS LOCATED. COORDINATE ALSO WITH FLOOR PLANS.
 2. SPECIALIZED CABINET SECTIONS ONLY ARE KEYED OR NOTED ON CABINET ELEVATIONS. OTHER CABINET SECTIONS ILLUSTRATE TYPICAL CONSTRUCTION AND NOT EVERY DOOR AND/OR DRAWER VARIATION IS SHOWN.
 3. ALL WORKSURFACES & COUNTERTOPS ARE PL-2 U.N.O.
 4. PROVIDE FINISHED END PANELS AND/OR END RETURNS AT OPEN ENDED CABINETRY (INCLUDING KNEE SPACES).
 5. PROVIDE PLAM GLAD TRIM AND FILLER PANELS WHERE EQUIPMENT IS LOCATED WITHIN CABINET UNITS.
 6. GLASS PANELS ARE 1/4" CLEAR TEMPERED GLAZING U.N.O.
 7. PROVIDE SIDE SPLASHES WHERE COUNTERTOPS ABUT WALLS AT SIDES - U.N.O.
 8. PROVIDE COUNTERTOP BRACE SUPPORTS AT 48" O.C. MAX. @ KNEE SPACES & LAVATORY COUNTERTOPS. U.N.O.
 9. PROVIDE 3" DIA. GROMMETS AT BACK OF COUNTERTOPS EXACT LOCATION TO BE COORDINATED WITH THE OWNER IN THE FIELD AT THE TIME OF INSTALLATION.
 10. PROVIDE BLOCKING WITHIN PARTNER FOR ALL CABINETRY ATTACHED TO WALLS. SEE DETAILS FOR ATTACHMENT DETAILS.
 11. PROVIDE ALL STRAIGHT RUN COUNTERTOPS THAT HAVE SINKS, WITH SEPARATE BACKSPLASH TO COUNTERTOP.
 12. FILE DRAWERS ARE NOTED ON ELEVATIONS. PROVIDE MINIMUM INSIDE CLEAR DIMENSIONS OF 13.5" WIDE BY 10.5" HIGH BY 20.5" DEEP.
 13. CABINET UNIT DEPTH IS AS SHOWN ON SECTION. U.N.O ON ELEVATIONS(S).
 14. FOR FIELD APPLIED MIRRORS, EXTEND MIRRORS FROM THE TOP OF COUNTERTOP SPLASH TO 6'-0" A.F.F., U.N.O.
 15. PROVIDE BOTTOM CLOSURE FOR FILLER PANELS AT TOE SPACES AND AT BOTTOM OF USER WARDEN CABINETS TO CLOSE OFF AND SEAL TIGHT ALL CONCEALED OPENINGS.
 16. ALL MILLWORK/CASEWORK TO BE PL-1 U.N.O.
- CABINET HARDWARE:
- DOOR HINGES TO BE BLUM T175580 CHROMED, CONCEALED, SELF-CLOSING. DRAWER SLIDES TO BE HEAVY DUTY ACCURIDE HAFELE #4034. DOWEL PINS TO BE MCKEY T1 D154 STAINLESS STEEL OR APPROVED EQUALS. MILLWORK REVEALS: PITTCO, VENEER CHANNEL, VPR75-38/38
- ALL RECEPTION/WAITING MILLWORK TO BE PREMIUM GRADE
- ALL EXAM ROOM MILLWORK AND P-LAM CASEWORK TO PER A/I STANDARDS.
- ALL CABINET/FILES TO BE LOCKABLE
- ## INTERIOR ELEVATION NOTES
1. GENERAL CONTRACTOR TO COORDINATE EQUIPMENT OUTLINED IN "EQUIPMENT LEGEND" WITH OWNER & OWNER'S MEDICAL EQUIPMENT REPRESENTATIVE. THIS INCLUDES VERTICAL AND HORIZONTAL MOUNTING HEIGHTS OF ALL DEVICES. COORDINATION WITH ARCHITECTURAL, MECHANICAL, ELECTRICAL AND PLUMBING. THE ARCHITECT SHALL RECEIVE SHOP DRAWINGS SHOWING FINALIZED SELECTION OF EQUIPMENT AND SPECIFICA MODEL NUMBERS REVIEWED BY DESIGN TEAM/ENGINEERS PRIOR TO PROCEEDING WITH SCOPE OF WORK.
 2. ELECTRICAL OUTLETS ARE ONLY SHOWN FOR COORDINATION WITH EQUIPMENT. SEE ELECTRICAL DRAWINGS FOR MORE INFORMATION..
 3. LOW VOLTAGE BY OWNER'S REPRESENTATIVE.
 4. FURNITURE SHOWN IS TO BE PROVIDED BY OWNER U.N.O. GENERAL CONTRACTOR TO COORDINATE WITH OWNER ON DELIVERY SCHEDULE.



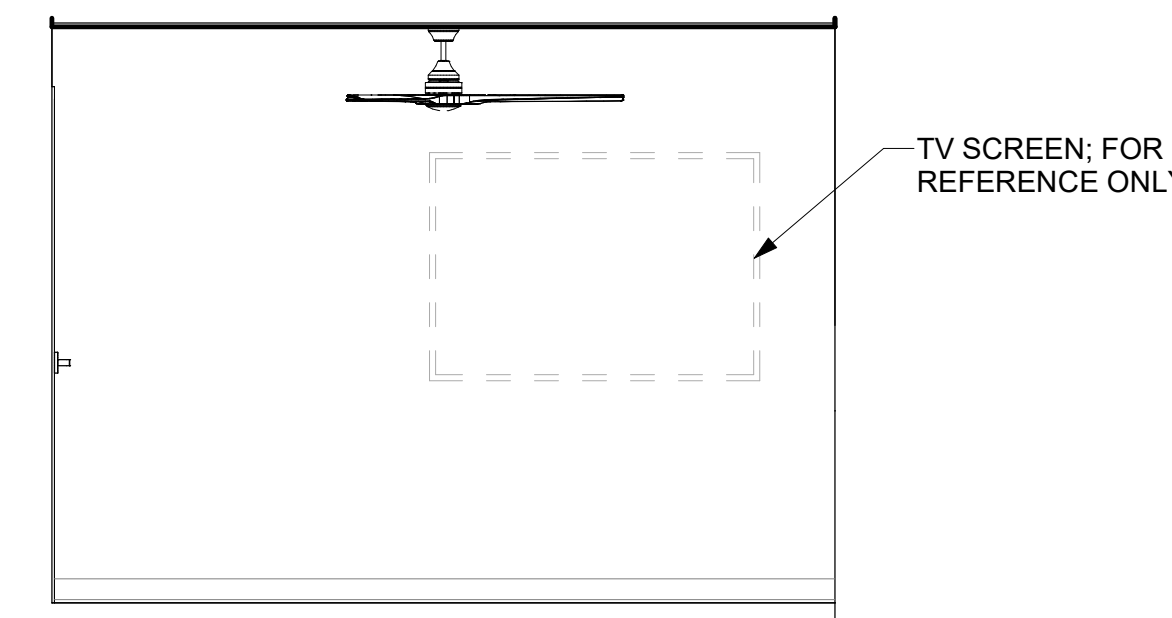
5 INT. ELEV. -
TOILET/SHWR 126 D
SCALE: 3/8" = 1'-0"



9 INT. ELEV. - TOILET/SHWR 128 D
SCALE: 3/8" = 1'-0"

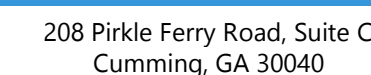


13 INT. ELEV. -
TOILET/SHWR 127 C
SCALE: 3/8" = 1'-0"



17 INT. ELEV. - TYP. BUNK C
SCALE: 3/8" = 1'-0"

1. GENERAL CONTRACTOR TO COORDINATE EQUIPMENT OUTLINED IN "EQUIPMENT LEGEND" WITH OWNER & OWNER'S MEDICAL EQUIPMENT REPRESENTATIVE. THIS INCLUDES VERTICAL AND HORIZONTAL MOUNTING HEIGHTS OF ALL DEVICES, COORDINATION WITH ARCHITECTURAL, MECHANICAL, ELECTRICAL, PLUMBING, AND HVAC. CONTRACTOR TO RECEIVE SHOP DRAWINGS SHOWING FINALIZED SELECTION OF EQUIPMENT AND SPECIFICA MODEL NUMBERS REVIEWED BY DESIGN TEAM/ENGINEERS PRIOR TO ORDERING AND SO THAT WORK CAN BE COORDINATED.
2. ELECTRICAL OUTLETS ARE ONLY SHOWN FOR COORDINATION WITH EQUIPMENT. SEE ELECTRICAL DRAWINGS FOR MORE INFORMATION.
3. LOW VOLTAGE BY OWNER'S REPRESENTATIVE.
4. EQUIPMENT SHOWN IS TO BE PROVIDED BY OWNER U.N.O. GENERAL CONTRACTOR TO COORDINATE WITH OWNER ON DELIVERY SCHEDULE.



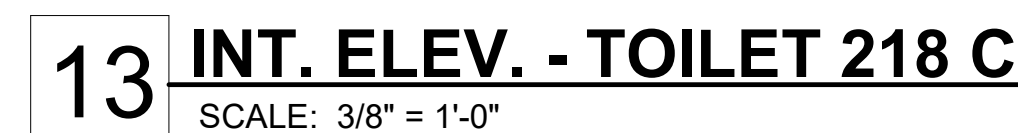
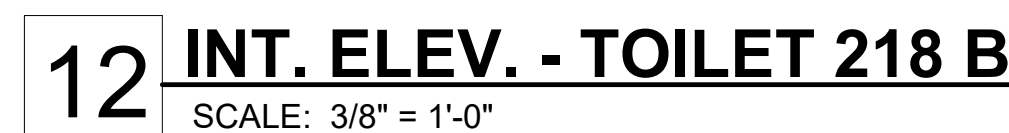
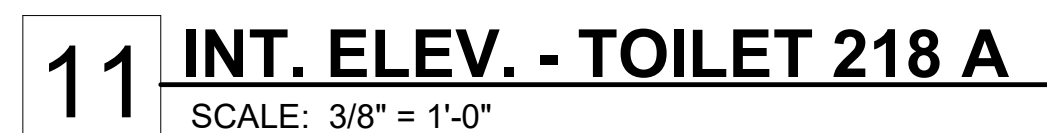
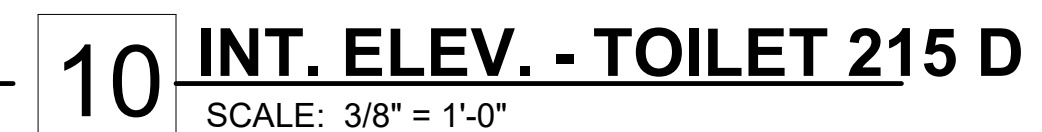
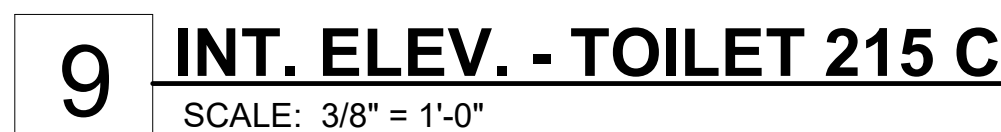
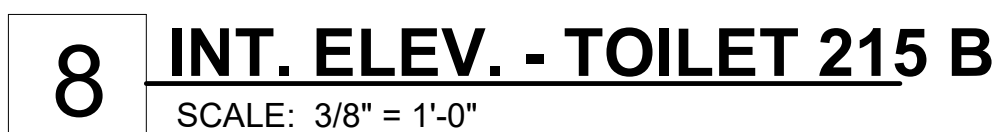
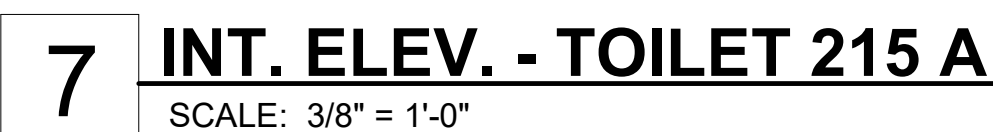
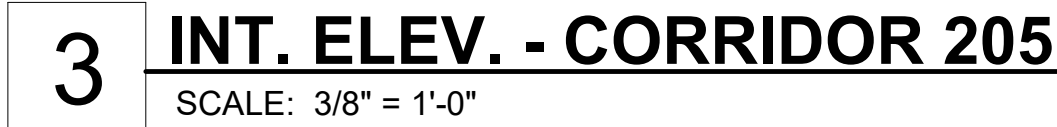
HIGHWAY 36
COVINGTON, GA 30014

[illegible]

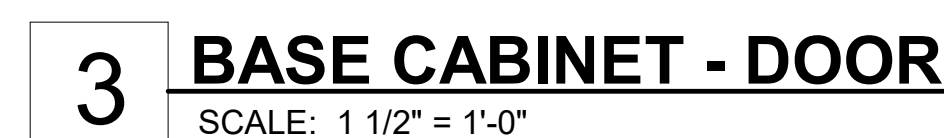
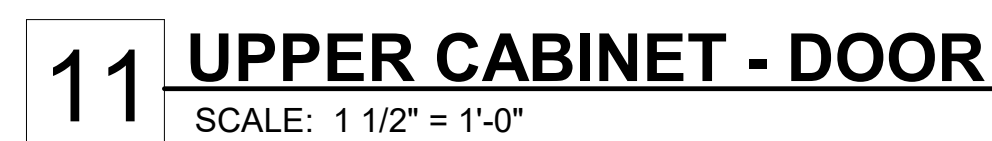
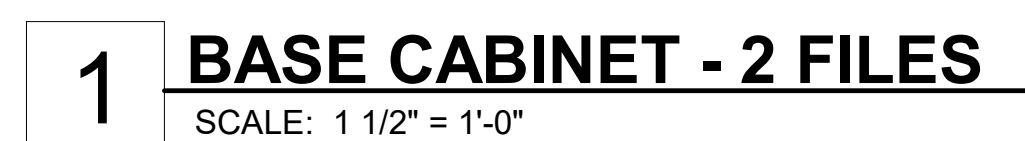
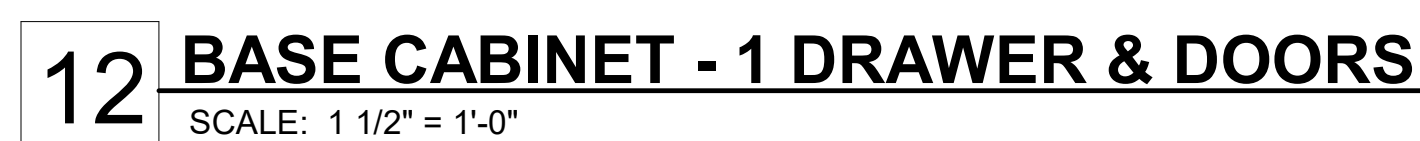
Sheet Title

Sheet No.

NOT RELEASED FOR CONSTRUCTION



NOT RELEASED FOR CONSTRUCTION



NOT RELEASED FOR CONSTRUCTION