



10641 Highway 36
Covington, GA
30014

www.sunbeltbuilders.com

t 770.786.3031
f 770.786.3046

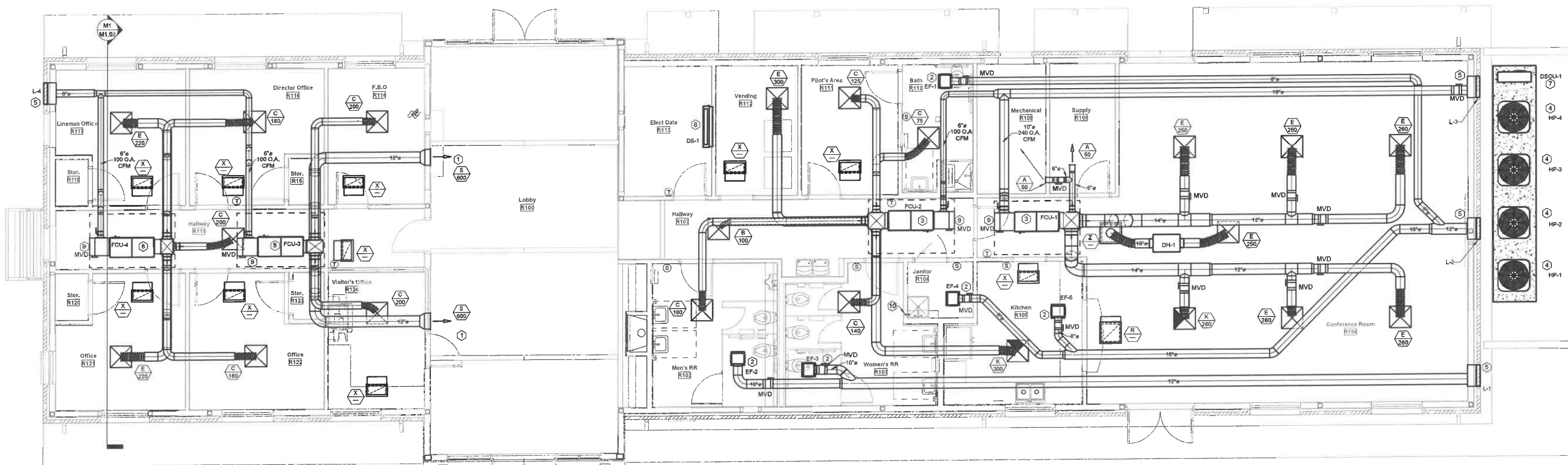
JACKSON COUNTY AIRPORT TERMINAL BUILDING

Mechanical Repair Services
P.O. Box 883
Watkinsville, GA 30677
ph: 706-546-5003
Brent Powell
bpowell@mrsheatingandcooling.com

23-0000 HVAC As-built

1 2 3 4 5 6 7 8 9 10 11 12

K
J
H
G
F
D
C
B
A



M1 HVAC - FLOOR PLAN
SCALE: 1/4" = 1'-0"
TRUE NORTH

GENERAL NOTES:

- ALL DUCT PENETRATIONS THROUGH WALLS SHALL BE SEALED. THE INTERSTITIAL SPACE BETWEEN THE DUCT AND WALL SHALL BE SEALED WITH CAULK, WHEN FIRE, SMOKE, OR FIRE-SMOKE DAMPERS ARE USED, REFER TO THE MANUFACTURER'S REQUIREMENTS FOR SEALING. ALL FAN COIL UNITS UTILIZE THE CEILING SPACE FOR A RETURN PLENUM AND ALL EXPOSED MATERIALS SHALL BE NONCOMBUSTIBLE OR A MAXIMUM FLAME SPREAD INDEX OF 25 AND A MAXIMUM SMOKE DEVELOPMENT INDEX OF 50.
- ALL SUPPLY DIFFUSERS SHALL HAVE A MINIMUM THROW OF 10 FEET AT 100 FPM FOR FULL ROOM COVERAGE.
- ALL FIRE DAMPERS AND FIRE/SMOKE DAMPERS SHALL HAVE A MINIMUM FIRE RESISTANCE RATING OF 1-1/2 HOURS U.N.O.
- ALL MECHANICAL EQUIPMENT SHALL BE CONTROLLED BY A COMPUTERIZED ENERGY MANAGEMENT SYSTEM.
- ALL ROOF MOUNTED EQUIPMENT SHALL BE LOCATED A MINIMUM OF 10' FROM EDGE OF ROOF.
- TRANSITION FROM SHOWN DUCT SIZE TO WALL GRILLE NECK SIZE.
- MECHANICAL CONTRACTOR SHALL COORDINATE AND PROVIDE ACCESS PANELS TO THE GENERAL CONTRACTOR TO INSTALL AS REQUIRED IN SPECIFICATION.
- THE BID DOCUMENTS ARE DESIGNED BASED ON THE BASIS OF DESIGN. IF A LISTED "EQUAL" IS USED IT IS THE MECHANICAL CONTRACTOR'S RESPONSIBILITY TO MAKE ANY REVISIONS AND MODIFICATIONS REQUIRED TO ACCOMMODATE THE "EQUAL" MANUFACTURER AT NO ADDITIONAL COST TO THE OWNER.
- PROVIDE AN EMERGENCY STOP BUTTON (MUSHROOM TYPE WITH COVER) LOCATED IN ADMINISTRATION AREA TO SHUT DOWN ALL EXHAUST FANS AND CLOSE ALL OUTSIDE AIR DAMPERS WHEN DEPRESSED.
- MINIMUM 10' SEPARATION BETWEEN O.A. INTAKES AND EXHAUST OR PLUMBING VENTS.
- COORDINATE THE EXACT LOCATION OF WALL MOUNTED SWITCHES AND SENSORS WITH DIVISION 26.
- PROVIDE & INSTALL STEPDOWN TRANSFORMERS AS REQUIRED WHEN 120V IS PROVIDED FOR A 24V DEVICE.
- ALL SUPPLY AND EXHAUST BRANCH DUCTS SHALL BE PROVIDED WITH VOLUME DAMPERS - ROUND AND RECTANGULAR DAMPERS SHALL BE PROVIDED WITH CONTINUOUS SQUARE SHAFT, END BEARINGS, 2" STANDOFF BRACKET AND LOCKING QUADRANTS.
- WHERE DUCT MOUNTED SMOKE DETECTOR ARE REQUIRED FOR HVAC EQUIPMENT SHUT DOWN, THE DUCT MOUNTED SMOKE DETECTORS SHALL BE INSTALLED IN THE SUPPLY DUCT OF UNIT SERVED PRIOR TO ANY BRANCH DUCTS.
- VOLUME DAMPERS SHALL ACCESSIBLE VIA A STEP LADDER AND REACHING ABOVE THE CEILING.
- BRANCH DUCTWORK SHALL BE THE SAME SIZE AS THE AIR DISTRIBUTION DEVICE SERVED U.N.O.
- HVAC SYSTEM COMPONENT LOCATIONS ARE DIAGRAMMATIC IN NATURE. COORDINATE EQUIPMENT LOCATIONS WITH DUCTWORK, PIPING, CONDUIT, CABLING, & STRUCTURAL MEMBERS TO ENSURE THAT ALL MANUFACTURER'S REQUIRED CLEARANCES ARE MET. COORDINATE ROOF MOUNTED EQUIPMENT LOCATIONS WITH STRUCTURAL MEMBERS TO AVOID DUCT/STRUCTURE CONFLICTS.
- CONTRACTOR SHALL COORDINATE EQUIPMENT VOLTAGES WITH THE ELECTRICAL CONTRACTOR AND ELECTRICAL PLANS PRIOR TO ORDERING.
- ALL PENETRATIONS THROUGH A SMOKE PARTITION SHALL BE FIRE CAULKED AROUND THE PENETRATION SMOKE TIGHT. SEE ARCHITECTURAL LIFE SAFETY PLANS FOR WALL RATINGS.
- ROUTE CONDENSATE FROM FAN COIL UNITS TO NEAREST DRAIN. DRAIN LINE SHALL BE INSULATED COPPER RUN AT UNIFORM MIN 1/8" SLOPE. ALL CONDENSATE DRAINS SHALL BE ROUTED AS CLOSE TO THE WALL AS POSSIBLE. SEE PLUMBING DRAWINGS FOR LOCATION OF DRAINS.
- WHERE MULTIPLE SPACES ARE SERVED BY A SINGLE UNIT ALL EXHAUST AND RETURN AIR PATHS SHALL BE PROVIDED WITH A MANUAL BALANCING DAMPER. WHERE BALANCING DAMPER IS NOT SHOWN ON PLAN, THE EXHAUST/RETURN GRILLE SHALL BE PROVIDED WITH AN O.D.D. ROUND AND RECTANGULAR DAMPERS SHALL BE PROVIDED WITH CONTINUOUS SQUARE SHAFT, END BEARINGS, 2" STANDOFF BRACKET AND LOCKING QUADRANTS.
- RETURN GRILLES OPENING TO A RETURN AIR PLENUM SHALL BE PROVIDED WITH A SOUND BOOT. SEE DETAIL.
- WHERE MULTIPLE SENSORS (TEMP, HUMIDITY, AND CO2) ARE SHOWN IN ONE ROOM, A SINGLE MULTIFUNCTION SENSOR SHALL BE PROVIDED BY THE BUILDING CONTROLS PROVIDER.
- ALL EQUIPMENT SHALL BE LABELED PER SPECIFICATION REQUIREMENTS. EQUIPMENT LABELS SHALL INCLUDE UNIT NUMBER AND ROOM NAME AND NUMBER OF THE SPACE SERVED.
- DIFFUSERS LOCATED ADJACENT TO TEMPERATURE SENSORS SHALL BE 3-WAY BLOW TYPE PER DETAIL.
- WHERE RETURN DUCTWORK STUBS INTO MECHANICAL CLOSET, THE PERIMETER OF THE RETURN DUCT SHALL BE SEALED AT THE WALL PENETRATION.
- ALL DUCTWORK, PIPING ETC. SHALL BE CONCEALED. LOCATED ABOVE CEILING OR IN CHASE U.N.O.
- ALL EXHAUST FANS, RELIEF HOODS, FLUES AND PLUMBING VENTS SHALL BE A MINIMUM OF 10' FROM ANY OUTSIDE AIR INTAKES.
- CONTRACTOR SHALL COORDINATE ALL CONTROL DEVICE ELECTRICAL REQUIREMENTS AND LOCATIONS WITH ELECTRICAL CONTRACTOR.
- WHERE DUCTWORK, PIPING AND CONDUIT ARE NOT CONCEALED ABOVE A CEILING, THEY SHALL BE PAINTED. COORDINATE COLOR WITH GENERAL CONTRACTOR AND ARCHITECT.
- WHERE DAMPERS, VALVES AND EQUIPMENT ARE LOCATED ABOVE A HARD CEILING, ACCESS PANELS SHALL BE PROVIDED AND INSTALLED. ACCESS PANELS SHALL BE A MINIMUM OF 18"X18" BUT SHALL BE LARGE ENOUGH TO PROVIDE ACCESS TO CONCEALED DEVICES. IF ACCESS PROVIDED IS NOT LARGE ENOUGH TO PROVIDE ACCESS TO CONCEALED DEVICE, THE ACCESS PANEL SHALL BE REPLACED WITH THE APPROPRIATE SIZE ACCESS PANEL. CONTRACTOR SHALL DEMONSTRATE ADEQUATE ACCESS HAS BEEN ACHIEVED TO THE OWNER.
- MECHANICAL CONTRACTOR SHALL COORDINATE ALL DUCTWORK NOTED TO BE ROUTED IN THE JOIST BAY AND WEB WITH THE GENERAL CONTRACTOR FOR COORDINATION WITH THE STRUCTURAL FABRICATOR. THE GENERAL CONTRACTOR SHALL COORDINATE CROSS BRACING BETWEEN JOIST AND ROUTING OF DUCTWORK WITHIN JOIST.

DRAWING LEGEND			
SYMBOL	DEFINITION	SYMBOL	DEFINITION
	SUPPLY DIFFUSER		RETURN GRILLE
	AIR DEVICE DESIGNATOR		THERMOSTAT
	SIDEWALL GRILLE DESIGNATOR, A.F.F. HEIGHT IS TO BOTTOM OF GRILLE FACE		DUCTWORK OFFSETS
	HUMIDISTAT		CARBON DIOXIDE SENSOR
	SPIN-IN WITH VOLUME DAMPER		MANUAL VOLUME DAMPER
	SMD		FIRE DAMPER
	FSD		DEHUMIDIFICATION UNIT
	FCU		HEAT PUMP
	EF		LOUVER
	U.N.O.		ABOVE FINISHED FLOOR

DUCT SIZING CHART	
FLOW RATE (CFM)	SIZE (DIAMETER)
0-100	6"
101-200	8"
201-400	10"
401-600	12"

CHART CAN BE USED IF DUCT MAIN NEEDS TO BE SPLIT INTO MULTIPLE DUCTS TO FIT THROUGH TRUSS WEB.

KEYNOTES: (APPLIES TO THIS SHEET ONLY)

- SIDEWALL AIR DEVICE SHALL BE MOUNTED ON WALL APPROXIMATELY 9" A.F.F.
- CEILING MOUNTED EXHAUST FAN SHALL BE MOUNTED IN CEILING GRID.
- INDOOR FAN COIL UNIT SHALL BE MOUNTED HORIZONTALLY ABOVE CEILING. SUPPORT FROM STRUCTURE. ROUTE 1" CONDENSATE DOWN WALL IN WALL CAVITY AND TURN OUT 3" ABOVE SINK IN JANITORS ROOM - TURN DOWN INTO SINK. COORDINATE REQUIRED INSTALLATION SPACE WITH TRUSS PROVIDER. STRUCTURAL PLANS REQUIRE CUSTOM TRUSS AT THE UNITS FOR INSTALLATION. THIS MUST BE COORDINATE PRIOR TO THE TRUSSES BEING ORDERED. THE UNIT SHALL BE A MINIMUM OF 12" ABOVE THE CEILING. DUCTWORK SHALL BE ROUTED THROUGH THE TRUSS WEBBING AND BETWEEN THE TRUSSES. REFER TO DUCTWORK SIZING CHART FOR DUCT SIZES IF MODIFICATIONS ARE REQUIRED TO FIT THE SUPPLIED TRUSSES.
- OUTDOOR SPLIT SYSTEM UNIT SHALL BE MOUNTED ON CONCRETE PAD.
- LOUVER SHALL BE MOUNTED THROUGH EXTERIOR WALL.
- WALL MOUNTED DUCTLESS SPLIT SHALL BE MOUNTED APPROX. 7' A.F.F. ROUTE CONDENSATE TO DRAIN IN JANITORS ROOM - THE INTO CONDENSATE PIPE IN JANITORS ROOM. CONDENSATE AND REFRIGERANT PIPING SHALL BE RECESSED IN WALL CAVITY.
- DUCTLESS SPLIT HEAT PUMP SHALL BE MOUNTED ON CONCRETE PAD.
- INDOOR FAN COIL UNIT SHALL BE MOUNTED HORIZONTALLY ABOVE CEILING. SUPPORT FROM STRUCTURE. ROUTE 1" CONDENSATE TO EXTERIOR WALL - SEE P1.01 FOR ROUTING. SEE P3.01 FOR CONDENSATE DRAIN IN EXTERIOR WALL SPILL ON GRADE DETAIL. COORDINATE REQUIRED INSTALLATION SPACE WITH TRUSS PROVIDER. STRUCTURAL PLANS REQUIRE CUSTOM TRUSS AT THE UNITS FOR INSTALLATION. THIS MUST BE COORDINATE PRIOR TO THE TRUSSES BEING ORDERED. THE UNIT SHALL BE A MINIMUM OF 12" ABOVE THE CEILING. DUCTWORK SHALL BE ROUTED THROUGH THE TRUSS WEBBING AND BETWEEN THE TRUSSES. REFER TO DUCTWORK SIZING CHART FOR DUCT SIZES IF MODIFICATIONS ARE REQUIRED TO FIT THE SUPPLIED TRUSSES.
- RETURN DUCT SHALL BE SAME SIZE AS FCU CONNECTION SIZE. RETURN SHALL BE OPEN TO PLENUM WITH VOLUME DAMPER TO ALLOW FOR OUTSIDE AIR INTAKE.
- CONDENSATE PIPING ROUTED DOWN IN WALL CAVITY TO SINK IN JANITORS ROOM.

AS-BUILT

CHANGES REQUIRED: YES ☒ NO ☐

Name (Print) Brand Power

Signature [Signature]

Company (Print) Mechanical Repair Service

Date 12/15/2025



MBA# 2366

HATHESONBALL & ASSOCIATES, INC.
11265 ELKINS RD. SUITE F-3
ROSWELL, GEORGIA 30076
PHONE: (770) 751-0773
WWW.HATHESONBALL.COM

JACKSON COUNTY AIRPORT- TERMINAL AREA DEVELOPMENT

500 Sky Harbor Way, Jefferson, GA

HVAC - FLOOR PLAN



Goodwyn Mills Cawood, LLC
6120 Powers Ferry Road NW, Suite 200
Atlanta, GA 30339
T 770.952.2481
GMCNETWORK.COM

ISSUE DATE

CONSTRUCTION 01/29/24

DOCUMENTATION

M1.01

GMC #AATL230012



DUCTLESS SPLIT SYSTEM SCHEDULE											
MARK	CFM	COOLING (95°F OA TEMP.)			HEATING (47°F OA TEMP.)			BASIS OF DESIGN			NOTES
		E.A.T. DBWB (°F)	TOT. MBh	SEN. MBh	SEER	E.A.T. DBWB (°F)	TOT. MBh	H.S.P.F.	INDOOR UNIT	OUTDOOR UNIT	
DS-1/DSOU-1	425	80/67	18.0	12.6	15.0	70/60	25.0	9.5	PKA-A18KA	PUZ-A18NHA4	1, 2, 3, 4

NOTES:

1. COOLING CAPACITIES BASED 95°F/75°F AMBIENT. HEATING CAPACITIES BASED ON 17°F/15°F AMBIENT.
2. PROVIDE WITH REMOTE CONDENSATE PUMP LITTLE OR EQUAL.
3. CONDENSING UNIT OR HEAT PUMP SHALL BE MOUNTED ON EQUIPMENT HOUSEKEEPING PAD WHEN LOCATED ON GRADE. - SEE PLANS FOR UNIT LOCATION.
4. PROVIDE WITH HARDWIRED WALL MOUNTED THERMOSTAT.

FAN SCHEDULE							
MARK	CFM	DRIVE	E.S.P. (IN. W.G.)	HP	TYPE	BASIS OF DESIGN	NOTES
EF-1	150	DIRECT	0.375	0.1	CEILING	GREENHECK SP-A200	1, 2, 3
EF-2	300	DIRECT	0.375	0.2	CEILING	GREENHECK SP-A410	1, 2, 3
EF-3	225	DIRECT	0.375	0.1	CEILING	GREENHECK SP-A250	1, 2, 3
EF-4	125	DIRECT	0.375	0.1	CEILING	GREENHECK SP-A200	1, 2, 3
EF-5	150	DIRECT	0.375	0.1	CEILING	GREENHECK SP-A200	1, 2, 3

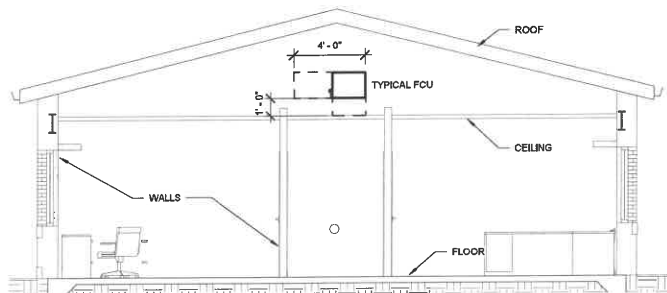
NOTES:

1. PROVIDE WITH BACKDRAFT DAMPER, EC MOTOR AND SPEED CONTROLLER.
2. CONTROL BY WALL SWITCH - PROVIDE WITH TRANSFORMER AND RELAYS AS REQUIRED. - DIVISION 23.
3. INTERLOCK FAN WITH LOUVER MOTORIZED DAMPER. DAMPER SHALL OPEN WHEN FAN IS ENABLED.

DEHUMIDIFICATION SCHEDULE				
Mark	CFM @ 0.0" W.G.	DEHUMIDIFICATION CAPACITY PTS./DAY	BASIS OF DESIGN	NOTES
DH-1	310	130	APRILAIRE 1870W	1

NOTES:

1. PROVIDE WITH INTEGRAL CONTROLS - SET AT 80% RH (ADJUSTABLE).



M1 TYPICAL FCU - VERTICAL CLEARANCE FROM CEILING
SCALE: 1/4" = 1'-0"

SPLIT SYSTEM - ELECTRIC											
MARK	CFM	OA CFM	E.S.P. (W.G.)	HP	SENSIBLE (MBH)	TOTAL (MBH)	REV. CYCLE (MBH)	AUX KW	BASIS OF DESIGN		NOTES
FCU-1HP-1	1800	240	0.60	.75	34.9	46.0	46.5	3.8	CARRIER FB4CNP048/25PH4448		1, 2, 3, 4
FCU-2HP-2	1800	100	0.60	.5	22.9	28.1	28.2	3.8	CARRIER FB4CNP038/25PH4430		1, 2, 3, 4
FCU-3HP-3	1800	100	0.60	.75	34.9	46.0	46.5	3.8	CARRIER FB4CNP048/25PH4448		1, 2, 3, 4
FCU-4HP-4	1000	100	0.60	.33	22.9	28.1	27.9	3.8	CARRIER FB4CNP030/25PH4430		1, 2, 3, 4

NOTES:

1. COOLING CAPACITIES BASED 95°F/75°F AMBIENT. HEAT PUMP CAPACITIES BASED ON 17°F/15°F AMBIENT.
2. PROVIDE HORIZONTAL FAN COILS WITH A CONDENSATE OVERFLOW PAN AND SAFETY FLOAT SWITCH THAT SHUTS THE UNIT DOWN, IF OVERFLOW PAN FILLS WITH CONDENSATE.
3. HEAT PUMP SHALL BE MOUNTED ON EQUIPMENT HOUSEKEEPING PAD WHEN LOCATED ON GRADE. - SEE PLANS FOR UNIT LOCATION.
4. ELECTRIC HEATER SHALL BE INTEGRAL TO UNIT. AUX KW SHOWN SHALL BE OUTPUT AT ELECTRICAL VOLTAGE PROVIDED.

AIR DISTRIBUTION SYSTEM							
MARK	TYPE	SIZE IN INCHES			FINISH	BASIS OF DESIGN	NOTES
		FACE	BACKPAN	NECK			
A	SUPPLY	6 x 8	N/A	6 x 6	WHITE	TITUS 300RS	
B	SUPPLY	24 x 24	18 x 18	6"	WHITE	TITUS TDC	1
C	SUPPLY	24 x 24	18 x 18	8"	WHITE	TITUS TDC	1
E	SUPPLY	24 x 24	18 x 18	10"	WHITE	TITUS TDC	1
K	SUPPLY	24 x 24	18 x 18	10"	WHITE	TITUS TDC 3-WAY	1, 2
R	RET/EXH	24 x 24	N/A	22 x 22	WHITE	TITUS 50F	
S	SUPPLY	20 x 14	N/A	18 x 12	WHITE	TITUS 300RS	
X	RET/EXH	24 x 12	N/A	22 x 10	WHITE	TITUS 50F	
Z	RET/EXH	24 x 24	N/A	22 x 22	WHITE	TITUS 50F	1

NOTES:

1. PROVIDE TRANSITION FROM SQUARE NECK TO ROUND NECK.
2. DIFFUSER SHALL BE 3-WAY BLOW TYPE. SEE DETAIL.

LOUVER SCHEDULE					
MARK	SIZE	FREE AREA SQ. FT.	SERVICE	BASIS OF DESIGN	NOTES
L-1	24x12	0.68	EXHAUST	GREENHECK ESD435	1, 2
L-2	24x12	0.68	EXHAUST	GREENHECK ESD435	1, 2
L-3	24x12	0.68	OUTSIDE AIR	GREENHECK ESD435	1, 3
L-4	24x12	0.68	OUTSIDE AIR	GREENHECK ESD435	1, 3

NOTES:

1. COORDINATE CUSTOM COLOR FROM FULL RANGE OF COLORS WITH ARCHITECT.
- LOUVER SHALL HAVE A KYNAR FINISH.
2. PROVIDE WITH MOTORIZED DAMPER INTERLOCKED WITH FAN SERVED.
3. PROVIDE WITH MOTORIZED DAMPER INTERLOCKED WITH FAN COIL SERVED.

GMC

Goodwyn Mills Cawood, LLC
6120 Powers Ferry Road NW, Suite 200
Atlanta, GA 30339
T 770.952.2481
GMCNETWORK.COM

ISSUE DATE

CONSTRUCTION 07/29/24

DOCUMENTATION

DRAWN BY: HC

CHECKED BY: SB

JACKSON COUNTY AIRPORT- TERMINAL AREA DEVELOPMENT

500 Sky Harbor Way, Jefferson, GA

GMC # AATL230012



HVAC - SCHEDULES

M1.02

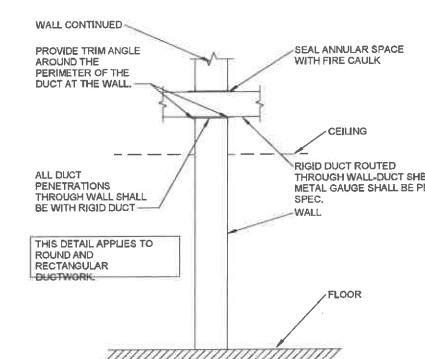
AS-BUILT	
CHANGES REQUIRED	YES <input checked="" type="checkbox"/> NO <input type="checkbox"/>
Name (Print)	Brian Powell
Signature	<i>Brian Powell</i>
Company (Print)	Mechanical Repair Service
Date	12/15/2025

MBA
CONSULTING
ENGINEERS

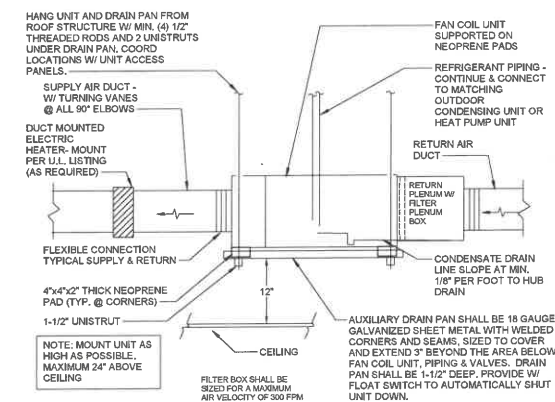
MBA# 2366

MATHERSON-BALL & ASSOCIATES, INC.
11885 ELKINS RD., SUITE F-3
ROSWELL, GEORGIA 30076
PHONE: (770) 791-0779
WWW.MATHERSONBALL.COM

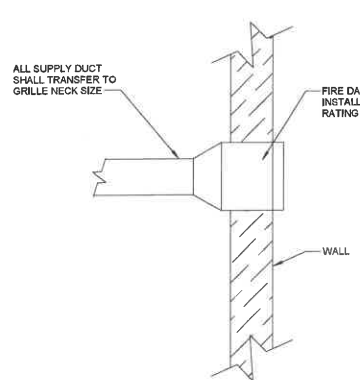
1 2 3 4 5 6 7 8 9 10 11 12



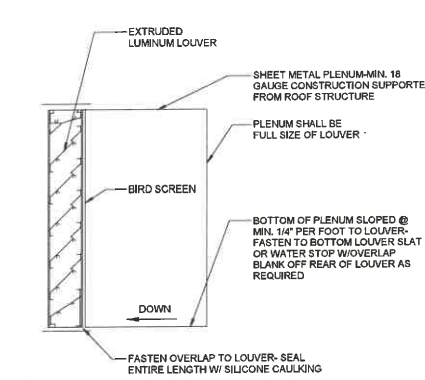
M4 DUCT WALL PENETRATION DETAIL
SCALE: SCALE: NONE



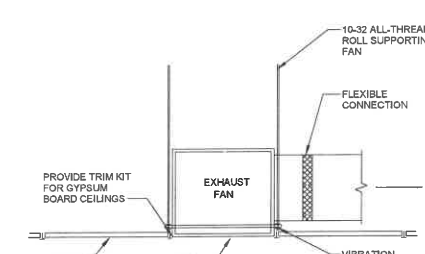
M3 HORIZONTAL FAN - COIL UNIT INSTALLATION DETAIL
SCALE: NONE



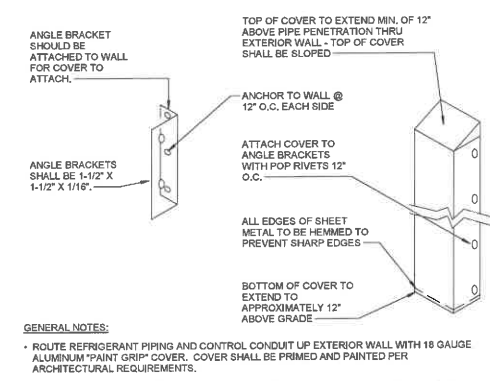
M2 SIDEWALL DIFFUSER TRANSITION DETAIL
SCALE: SCALE: NONE



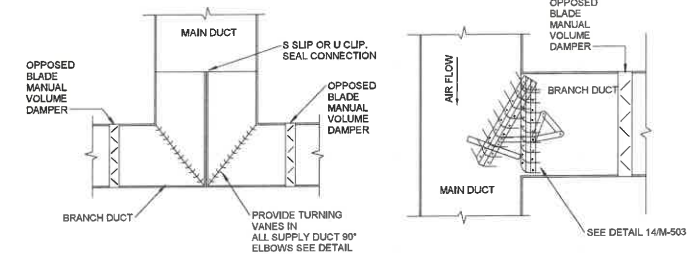
M1 LOUVER/ PLENUM MOUNTING DETAIL - TYPICAL
SCALE: SCALE: NONE



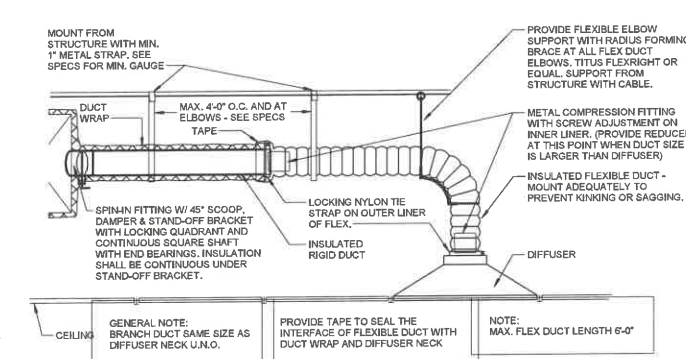
M8 CEILING MOUNTED EXHAUST FAN DETAIL
SCALE: SCALE: NONE



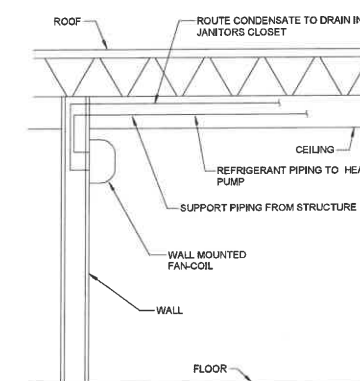
M7 REFRIGERANT PIPING COVER DETAIL
SCALE: SCALE: NONE



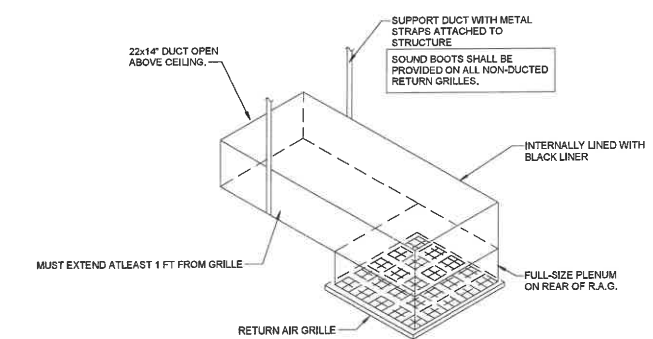
M6 TEE AND BRANCH TAKE-OFF DETAIL
SCALE: SCALE: NONE



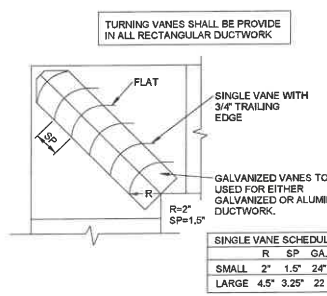
M5 TYPICAL DIFFUSER RUNOUT DETAIL
SCALE: SCALE: NONE



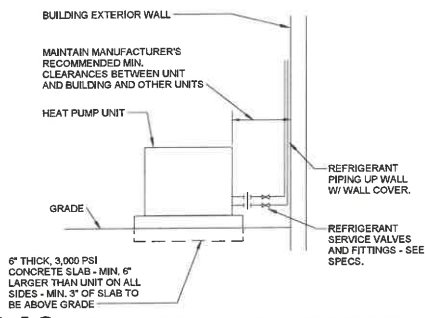
M12 WALL MOUNTED DUCTLESS SPLIT
SCALE: SCALE: NONE



M11 TYP. RETURN GRILLE BOOT DETAIL
SCALE: SCALE: NONE



M10 SQUARE ELBOW WITH TURNING VANES
SCALE: SCALE: NONE



M9 OUTDOOR HEAT PUMP DETAIL
SCALE: SCALE: NONE

1/29/2024 4:23:34 PM TEMPLATE VERSION: 2022.1



Goodwyn Mills Caywood, LLC
6120 Powers Ferry Road NW, Suite 200
Atlanta, GA 30339
T 770.952.2481
GMCNETWORK.COM

ISSUE	DATE
CONSTRUCTION	07/29/24
DOCUMENTATION	
DRAWN BY:	HC
CHECKED BY:	SB

JACKSON COUNTY AIRPORT- TERMINAL AREA DEVELOPMENT
500 Sky Harbor Way, Jefferson, GA



HVAC - DETAILS

M1.03

AS-BUILT

CHANGES REQUIRED: YES ☒ NO ☐

Name (Print) Blair Powell

Signature [Signature]

Company (Print) Mechanical Repair Service

Date 12/15/2025



MBA# 2366
MATTHEW D. BALL & ASSOCIATES, INC.
11285 ELKINS RD. SUITE F-3
ROSWELL, GEORGIA 30076
PHONE: (770) 791-1073
WWW.MATTHEWDONBALL.COM

